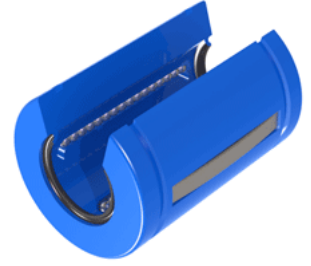
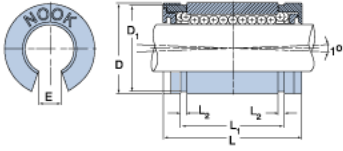


EXCEL XLEN08UU

Call 800-321-7800 or visit us online at www.nookindustries.com to configure and order your EXCEL XLEN08UU today!



Product Info

Nominal Shaft Diameter [in]	$\frac{1}{2}$
Part Number	XLEN08UU

Dimensions

D1 [in]	0.8209
E [in]	0.32
L Maximum [in]	1.230
L Minimum [in]	1.250
L1 Maximum [in]	1.012
L1 Minimum [in]	1.032
L2 [in]	0.050
Housing Bore Diameter D Maximum [in]	0.8755
Housing Bore Diameter D Minimum [in]	0.8750

Performance Specifications

Dynamic Load Maximum [lb]	152
Dynamic Load Normal [lb]	152
Number of Ball Circuits	3
Static Load Maximum [lb]	112
Static Load Normal [lb]	112