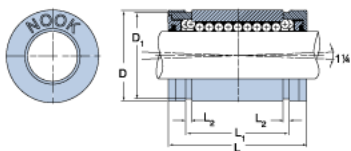
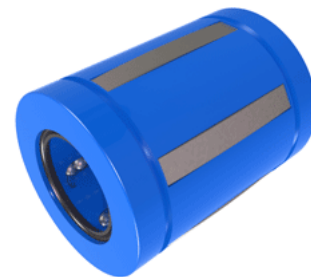


EXCEL XLEC20UU

Call 800-321-7800 or visit us online at www.nookindustries.com to configure and order your EXCEL XLEC20UU today!



Product Info

| | |
|-----------------------------|-------------------------------|
| Nominal Shaft Diameter [in] | 1 ¹ / ₄ |
| Part Number | XLEC20UU |

Dimensions

| | |
|--------------------------------------|--------|
| D1 [in] | 1.8890 |
| L Maximum [in] | 2.600 |
| L Minimum [in] | 2.625 |
| L1 Maximum [in] | 1.984 |
| L1 Minimum [in] | 2.004 |
| L2 [in] | 0.086 |
| Housing Bore Diameter D Maximum [in] | 2.0008 |
| Housing Bore Diameter D Minimum [in] | 2.0000 |

Performance Specifications

| | |
|---------------------------|------|
| Number of Ball Circuits | 6 |
| Dynamic Load Maximum [lb] | 1078 |
| Dynamic Load Normal [lb] | 1017 |
| Static Load Maximum [lb] | 911 |
| Static Load Normal [lb] | 712 |