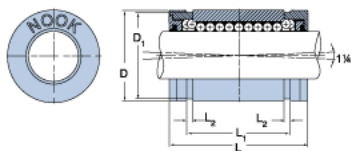
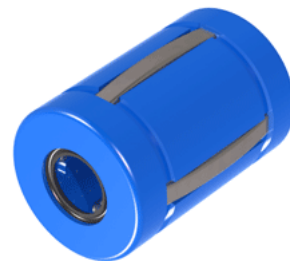


## EXCEL XLEC04UU

Call 800-321-7800 or visit us online at [www.nookindustries.com](http://www.nookindustries.com) to configure and order your EXCEL XLEC04UU today!



### Product Info

Nominal Shaft Diameter [in]	$1\frac{1}{4}$
Part Number	XLEC04UU

### Dimensions

D1 [in]	0.4687
L Maximum [in]	0.735
L Minimum [in]	0.750
L1 Maximum [in]	0.501
L1 Minimum [in]	0.511
L2 [in]	0.039
Housing Bore Diameter D Maximum [in]	0.5005
Housing Bore Diameter D Minimum [in]	0.5000

### Performance Specifications

Number of Ball Circuits	4
Dynamic Load Maximum [lb]	45
Dynamic Load Normal [lb]	39
Static Load Maximum [lb]	38
Static Load Normal [lb]	27