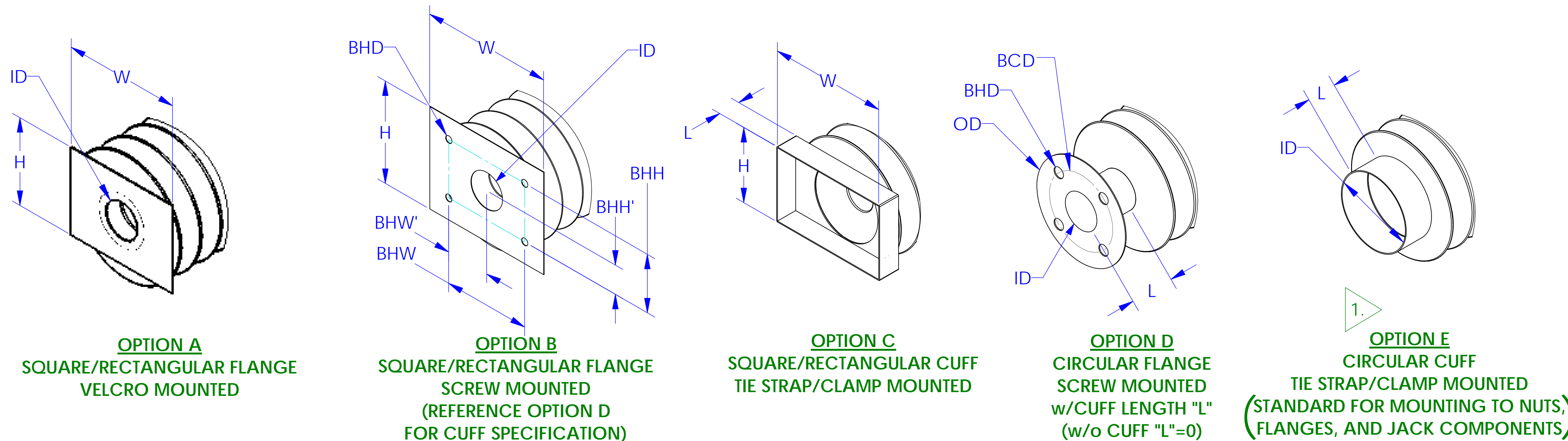


END CONFIGURATION OPTIONS FOR BOOT MOUNTING



INSTRUCTIONS:

1. END CONFIGURATION OPTIONS "A" & "E" ARE NOOK STANDARD ENDS FOR MOUNTING TO NOOK COMPONENTS.
2. IF STANDARD END OPTIONS ARE CHOSEN, COMPLETE ONLY THE "STANDARD" SECTION OF THE TABLE BELOW.
3. IF CUSTOM ENDS ARE REQUIRED, COMPLETE BOTH THE "STANDARD" AND "CUSTOM" SECTIONS OF THE TABLE BELOW.
4. IF BELLOWS ARE NON-STANDARD, OUTSIDE DIAMETER IS REQUIRED. (REFERENCE TABLE 2), FILL IN CUSTOM "BOD". [NON-STANDARD SMALLER BELLOWS OD WILL INCREASE THE MINIMUM (SOLID) COLLAPSED LENGTH OF THE BOOT.]
5. GUIDES ARE RECOMMENDED FOR HORIZONTAL APPLICATIONS WITH MAXIMUM LENGTHS EXCEEDING 24" (NUMBER OF GUIDES DETERMINED BASED ON MAXIMUM TRAVEL/EXTENSION OF BOOT, ONE GUIDE FOR EACH 24", STARTING WITH 1 GUIDE FOR 24" TO 48").
6. TABS, TO PREVENT OVER STRETCHING, ARE RECOMMENDED FOR MAXIMUM LENGTHS EXCEEDING 65".
7. COLLAPSED LENGTH WILL DOUBLE WITH ZIPPER OPTION.

TABLE 1: BOOT MATERIAL SELECTION

| DESCRIPTION | TEMPERATURE RANGE | APPLICATION COMMENTS |
|--|-------------------|---|
| NEOPRENE-COVERED NYLON (STANDARD)(NCN) | -30 °F TO +260 °F | OIL, WATER, AND WEATHER RESISTANT |
| HYPALON-COATED NYLON(HCN) | -30 °F TO +300 °F | CHEMICAL RESISTANCE, WASH DOWN |
| SILICONE-COATED FIBERGLASS(SCF) | -67 °F TO +550 °F | HIGH TEMPERATURE |
| ALUMINUM-COATED FIBERGLASS(ACF) | -65 °F TO +700 °F | HIGH TEMPERATURE, HOT CHIPS, WELDING SPLATTER |

1. **OPTION E NOTE:**
STANDARD CIRCULAR CUFF DIAMETER AT END OF LIFT SHAFT IS SIZED TO FIT STANDARD CLEVIS BODY DIAMETER

TABLE 2: STANDARD BOOT DIMENSIONS PER JACK SIZE (REF.)

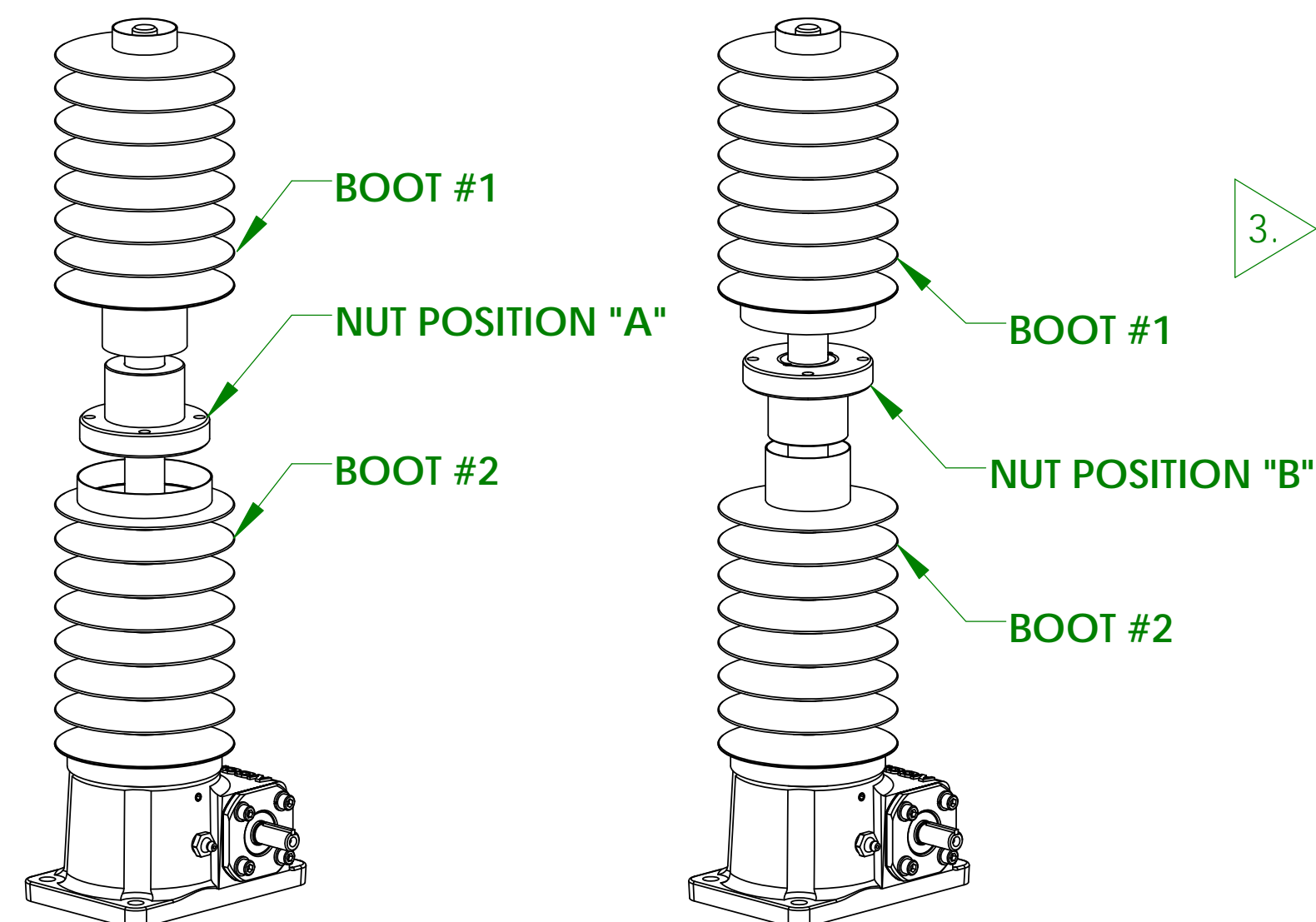
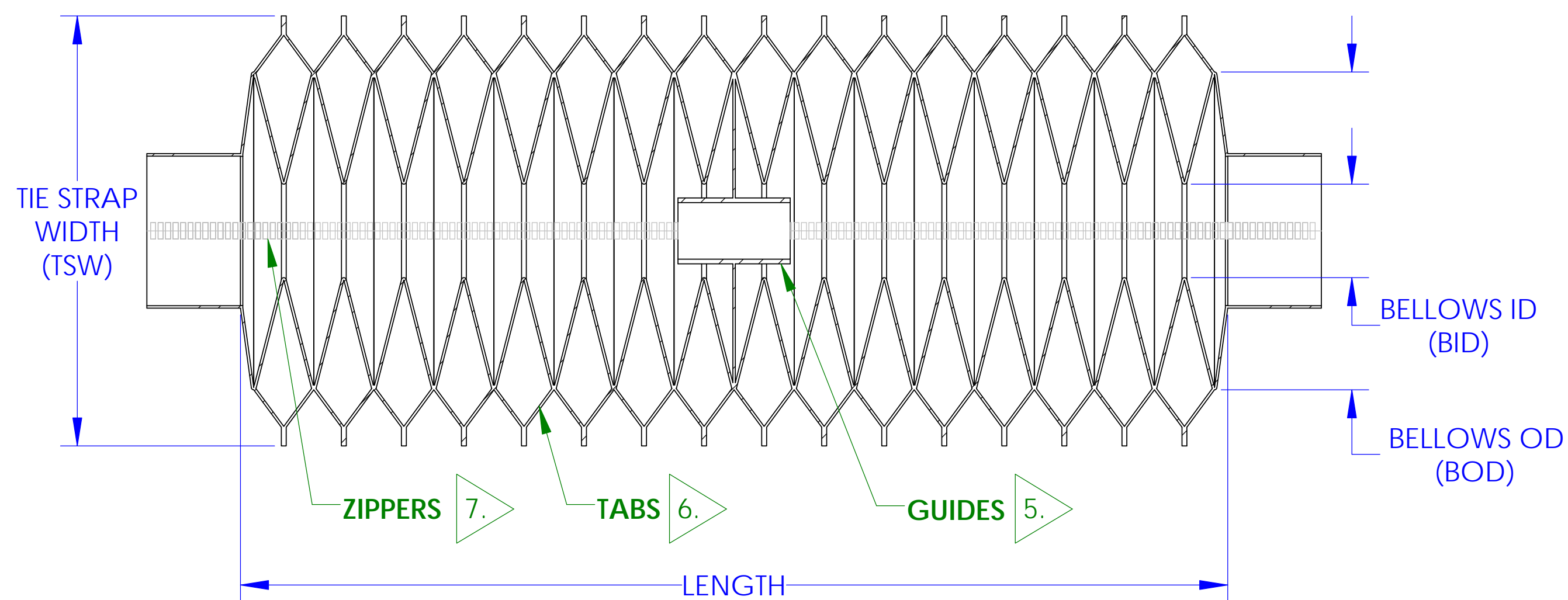
| JACK MODELS | SCREW DIA. | BELLOWS OUTER Ø (BOD) | BELLOWS INNER Ø (BID) | TIE STRAP WIDTH (TSW) |
|-----------------------------|-------------|-----------------------|-----------------------|-----------------------|
| 0.5-BSJ (ALL MSJ) | 0.63 | 4.00 | 1.00 | 5.50 |
| 1-BSJ (1-MSJ) | 0.75 | 4.25 | 1.25 | 5.75 |
| 2, 2.5 & 3-BSJ (2, 2.5-MSJ) | 1.00 - 1.25 | 4.50 | 1.50 | 6.00 |
| 5, 10-BSJ (5-MSJ) | 1.50 | 5.00 | 2.00 | 6.50 |
| (10-MSJ) | 2.00 | 5.50 | 2.50 | 7.00 |
| (15-MSJ) | 2.25 | 5.75 | 2.75 | 7.25 |
| 20-BSJ (20-MSJ) | 2.50 | 6.00 | 3.00 | 7.50 |
| 30-BSJ (30-MSJ) | 3.38 | 7.50 | 4.50 | 9.00 |
| (35-MSJ) | 3.75 | 8.00 | 5.00 | 9.50 |
| 50, 75, 100-BSJ | 4.00 | 9.00 | 6.00 | 10.50 |
| (50-MSJ) | 4.50 | 9.50 | 6.50 | 11.00 |
| (75-MSJ) | 5.00 | 10.00 | 7.00 | 11.50 |
| (100-MSJ) | 6.00 | 11.00 | 8.00 | 12.50 |

2. STANDARD

3. CUSTOM

| | BOOT #1 | | BOOT #2 | |
|------------------------------------|---------|--------|---------|--------|
| | END #1 | END #2 | END #3 | END #4 |
| END CONFIGURATION | | | | |
| MINIMUM LENGTH | | | | |
| MAXIMUM LENGTH | | | | |
| 5. GUIDES (Y/N) | | | | |
| 6. TABS (Y/N) | | | | |
| 7. ZIPPERS (Y/N) | | | | |
| HORIZONTAL OR VERTICAL APPLICATION | | | | |
| BOOT MATERIAL (TABLE 1) | | | | |
| CUFF LENGTH (L) | | | | |
| WIDTH (W) | | | | |
| HEIGHT (H) | | | | |
| OUTER DIAMETER (OD) | | | | |
| INNER DIAMETER (ID) | | | | |
| BOLT HOLE WIDTH (BHW) | | | | |
| BOLT HOLE WIDTH' (BHW') | | | | |
| BOLT HOLE HEIGHT (BHH) | | | | |
| BOLT HOLE HEIGHT' (BHH') | | | | |
| BOLT HOLE DIAMETER (BHD) | | | | |
| BOLT CIRCLE DIAMETER (BCD) | | | | |
| # OF BOLT HOLES | | | | |
| BELLOWS OD (BOD) (TABLE 2) | | | | |
| BELLOWS ID (BID) (TABLE 2) | | | | |

ADDITIONAL INFORMATION



ROTATING STYLE JACK ASSEMBLIES
BOOT #1: END OF SCREW TO NUT ASSEMBLY
BOOT #2: NUT ASSEMBLY TO JACK HOUSING

UNLESS OTHERWISE SPECIFIED: DIMENSIONS ARE IN INCHES TOL ON ANGLE ±1° 1 PL ±.030 2 PL ±.015 3 PL ±.005 FINISH: 125 INTERPRET DIM AND TOL PER ASME Y14.5M - 1994

DR BY: DATE: CHKD BY: DATE: APPROVED BY: DATE:

THIRD ANGLE PROJECTION

THIS DRAWING IS THE PROPERTY OF NOOK INDUSTRIES INC. AND CANNOT BE REPRODUCED WITHOUT THE EXPRESSED WRITTEN CONSENT OF NOOK INDUSTRIES INC.

NOOK INDUSTRIES, INC. 4950 EAST 49TH STREET CLEVELAND, OHIO 44125-1016 USA

TITLE: BELLOWS BOOTS END CONFIGURATIONS FOR JACKS

SIZE: D CAGE CODE: 57855 DWG. NO.: BOOTS FOR JACKS REV: --3 SCALE: 1:2 SHEET 1 OF 1