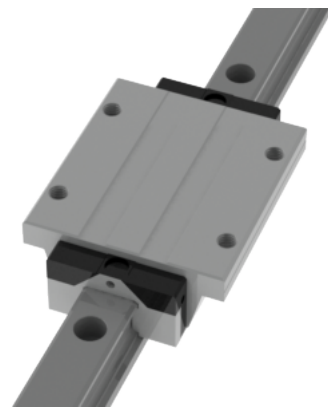
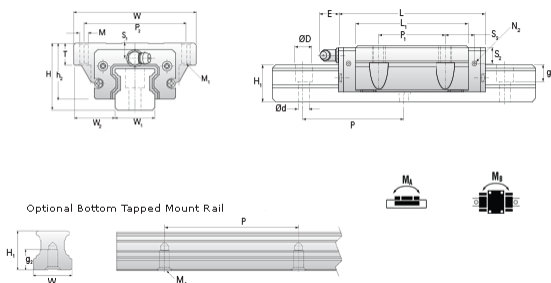


NHRC 20 FL Assembly

Call 800-321-7800 or visit us online at www.nookindustries.com to configure and order your NHRC 20 FL Assembly today!



Dimensions	
H [mm]	30
W2 [mm]	21.5
Long Caged Ball Block Four Mounting Holes (Runner Block)Details	
Size [mm]	20
(Runner Block)Dimensions	
W [mm]	63
L [mm]	87.2
L1 [mm]	70.2
h2 [mm]	25
P1 [mm]	40
P2 [mm]	53
M1 [mm]	M5 Thru Bolt
M × g2	M6 × 10
T [mm]	9
N1	M3 × 7.5
N2	M3 × 5.5
N3 [O-Ring Seal]	P4
E [mm]	10
S1 [mm]	4
S2 [mm]	9.4
S3 [mm]	18.1
S4 [mm]	18.8
(Runner Block)Forces and Torques	
Basic Load Ratings C [kN]	20.4
Basic Load Ratings C0 [kN]	38.5
Static Moment Ratings-Ma [N-m]	390.0
Static Moment Ratings-Mb [N-m]	390.0
Static Moment Ratings-Mc [N-m]	415.0
(Runner Block)Weight	
Weight-Block [g]	504
Caged Ball Rail Top Mount (Top Mount Rail)Details	
Size [mm]	20
(Top Mount Rail)Dimensions	
W1 [mm]	20
H1 [mm]	20
P [mm]	60
D [mm]	9.5
d1 [mm]	6
g1 [mm]	8.5
(Top Mount Rail)Weight	
Weights-Rail [g/m]	2280.0
Caged Ball Rail Bottom Tapped Mount (Bottom Mount Rail)Details	
Size [mm]	20
(Bottom Mount Rail)Dimensions	
W1 [mm]	20
H1 [mm]	20
P [mm]	60
M × g3	M6 x 10
(Bottom Mount Rail)Weight	
Weights-Rail [g/m]	2280.0