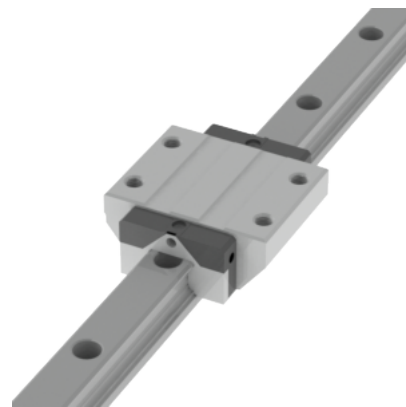
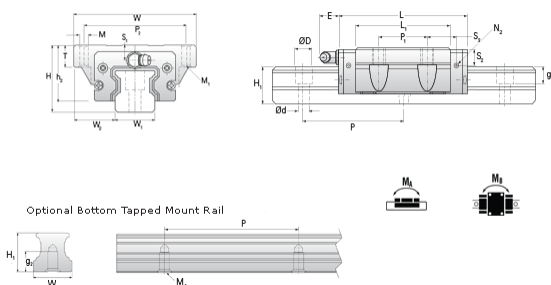


## NARC 30 FN Assembly

Call 800-321-7800 or visit us online at [www.nookindustries.com](http://www.nookindustries.com) to configure and order your NARC 30 FN Assembly today!



|  |              |
|--|--------------|
| <b>Dimensions</b>  |              |
| H [mm]   | 42           |
| W2 [mm]  | 31           |
| <b>Standard Caged Ball Block Four Mounting Holes (Runner Block)Details</b> |              |
| Size [mm]  | 30           |
| <b>(Runner Block)Dimensions</b>  |              |
| W [mm]   | 90           |
| L [mm]   | 95.5         |
| L1 [mm]  | 71.5         |
| h2 [mm]  | 35.2         |
| P1 [mm]  | 40           |
| P2 [mm]  | 72           |
| M1 [mm]  | M8 Thru Bolt |
| M × g2   | M10 × 15     |
| T [mm]   | 15           |
| N1   | M6 × 8.5     |
| N2   | M6 × 5       |
| N3 [O-Ring Seal]   | P5           |
| E [mm]   | 12           |
| S1 [mm]  | 7.5          |
| S2 [mm]  | 12           |
| S3 [mm]  | 20.8         |
| S4 [mm]  | 20.5         |
| <b>(Runner Block)Forces and Torques</b>                                    |              |
| Basic Load Ratings C [kN]  | 32.8         |
| Basic Load Ratings C0 [kN]   | 53.7         |
| Static Moment Ratings-Ma [N-m]   | 565.0        |
| Static Moment Ratings-Mb [N-m]   | 565.0        |
| Static Moment Ratings-Mc [N-m]   | 845.0        |
| <b>(Runner Block)Weight</b>  |              |
| Weight-Block [g]   | 1200         |
| <b>Caged Ball Rail Top Mount (Top Mount Rail)Details</b>                   |              |
| Size [mm]  | 30           |
| <b>(Top Mount Rail)Dimensions</b>  |              |
| W1 [mm]  | 28           |
| H1 [mm]  | 27           |
| P [mm]   | 80           |
| D [mm]   | 14           |
| d1 [mm]  | 9            |
| g1 [mm]  | 12           |
| <b>(Top Mount Rail)Weight</b>  |              |
| Weights-Rail [g/m]   | 4380.0       |
| <b>Caged Ball Rail Bottom Tapped Mount (Bottom Mount Rail)Details</b>      |              |
| Size [mm]  | 30           |
| <b>(Bottom Mount Rail)Dimensions</b>                                       |              |
| W1 [mm]  | 28           |
| H1 [mm]  | 27           |
| P [mm]   | 80           |
| M × g3   | M8 x 15      |
| <b>(Bottom Mount Rail)Weight</b>   |              |
| Weights-Rail [g/m]   | 4380.0       |