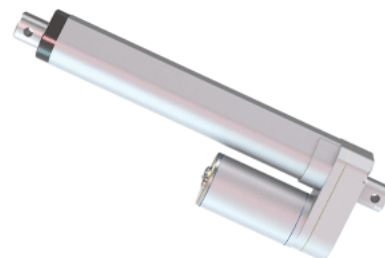
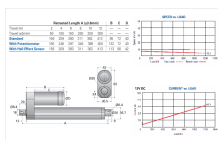


## VMD3-12-40

Call 800-321-7800 or visit us online at [www.nookindustries.com](http://www.nookindustries.com) to configure and order your VMD3-12-40 today!



### Product Info

Screw Type

Acme Screw

### Details

Voltage [VDC]

12

Gear Ratio

40:1

Speed [mm/s]

5

Load Capacity Rated Load [N]

1000

Load Capacity Maximum Load [N]

1200

Amps

3

### Performance Specifications

Duty Cycle [% of 5 Minutes]

25

Rated Cycles At Full Load

5000

Protection Class

IP65