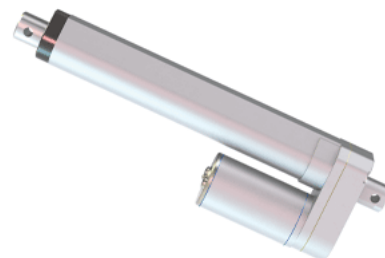
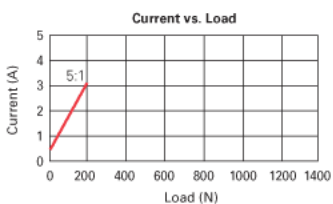
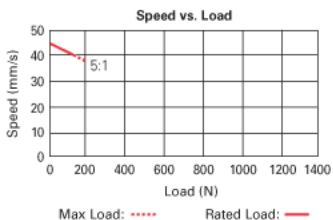
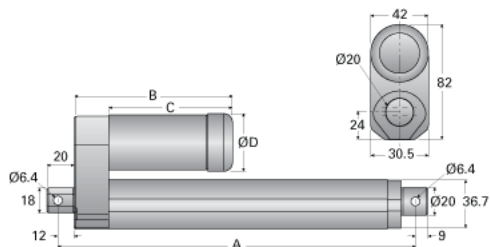


VMD3-12-5

Call 800-321-7800 or visit us online at www.nookindustries.com to configure and order your VMD3-12-5 today!



| | Retracted Length A (±3.8mm) | | | | | | B | C | D |
|-------------------------|-----------------------------|-----|-----|-----|-----|-----|-----|----|----|
| Travel (in) | 2 | 4 | 6 | 8 | 10 | 12 | — | — | — |
| Travel (±5mm) | 50 | 100 | 150 | 200 | 250 | 300 | — | — | — |
| Standard | 158 | 209 | 260 | 311 | 362 | 413 | 95 | 72 | 40 |
| With Potentiometer | 195 | 246 | 297 | 348 | 399 | 450 | 132 | 72 | 40 |
| With Hall Effect Sensor | 158 | 209 | 260 | 311 | 362 | 413 | 113 | 90 | 42 |



Product Info

Screw Type

Acme Screw

Details

Voltage [VDC]

12

Gear Ratio

5:1

Speed [mm/s]

40

Load Capacity Rated Load [N]

100

Load Capacity Maximum Load [N]

200

Amps

3

Performance Specifications

Duty Cycle [% of 5 Minutes]

25

Rated Cycles At Full Load

5000

Protection Class

IP65