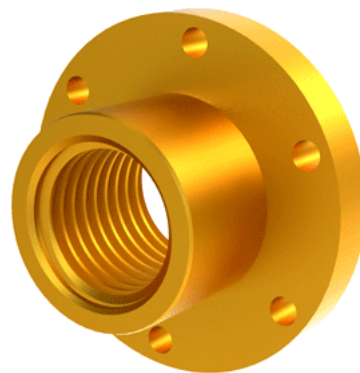
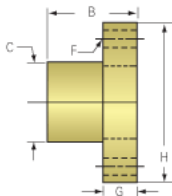


Bronze Acme Nut 6"-1 1/2 RH, with Integral Flange

Call 800-321-7800 or visit us online at www.nookindustries.com to configure and order your Bronze Acme Nut 6"-1 1/2 RH, with Integral Flange today!



Product Info

| | |
|------------------|--------|
| Part Number | 6954-1 |
| Thread Direction | RH |
| Type | Bronze |

Details

| | |
|---------------------------|-------|
| Lead [in] | 0.667 |
| Starts | 1 |
| Pitch [in] | 0.667 |
| Turns Per Inch | 1.5 |
| Lash (Maximum Axial) [in] | 0.025 |
| Nominal Rod Diameter [in] | 6.000 |
| Threads per Inch | 1.5 |
| Thread Code | 602 |
| Form | 2G |

Dimensions

| | |
|-----------------|-----------|
| B [in] | 7.00 |
| C [in] | 8.00 |
| F (n) Dia. [in] | (6) 1.125 |
| F BCD [in] | 11.000 |
| G [in] | 2.02 |
| H [in] | 14.00 |

Forces and Torques

| | |
|-------------------------------|-------|
| Torque to Raise 1 lb. [in-lb] | 0.474 |
|-------------------------------|-------|

Flange Part Numbers

| | |
|----------------------------|-----|
| Flange No-Lash Part Number | n/a |
| Flange Part Number | n/a |

Weight

| | |
|--------------------|-----|
| Flange Weight [lb] | n/a |
| Nut Weight [lb] | n/a |

Performance Specifications

| | |
|----------------------------|--------|
| Efficiency [%] | 22 |
| Lead Accuracy +/- [in/in] | 0.0006 |
| Dynamic Load Capacity [lb] | 180000 |
| Static Load Capacity [lb] | 576000 |