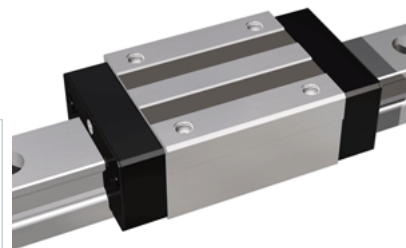
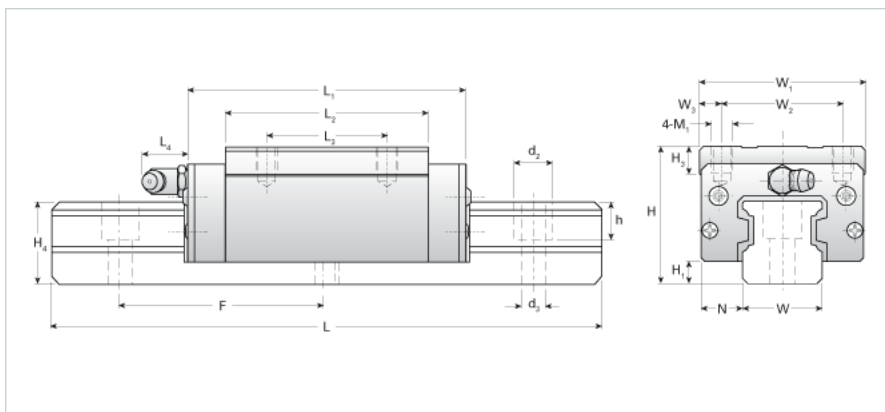


NH45ER Assembly

Call 800-321-7800 or visit us online at www.nookindustries.com to configure and order your NH45ER Assembly today!



Dimensions

H [mm]	70
H1 [mm]	11
N [mm]	20.5

Metric Profile Rail

(Rail)Details

Size [mm]	45
Type	Standard

(Rail)Dimensions

d2 [mm]	20
d3 [mm]	14
h [mm]	21
H4 [mm]	42
F [mm]	105
W [mm]	45
Maximum Length [mm]	3000

(Rail)Weight

Weights-Rail [kg/m]	12.9
---------------------	------

Metric Runner Block, Heavy Load, Narrow Width, 4 Tapped Holes

(Runner Block)Details

Size [mm]	45
-----------	----

(Runner Block)Dimensions

L1 [mm]	139
L2 [mm]	102
L3 [mm]	60
L4 [mm]	16
M1 x l	M10x17
H3 [mm]	15
W1 [mm]	86
W2 [mm]	60
W3 [mm]	13

(Runner Block)Forces and Torques

Basic Load Ratings C [kN]	60.20
Basic Load Ratings C [lbf]	13532
Basic Load Ratings C0 [kN]	95.71
Basic Load Ratings C0 [lbf]	21510
Static Moment Ratings-Ma [kN-m]	1.30
Static Moment Ratings-Ma [lb-in]	11544
Static Moment Ratings-Mb [kN-m]	1.30
Static Moment Ratings-Mb [lb-in]	11544
Static Moment Ratings-Mc [kN-m]	2.30
Static Moment Ratings-Mc [lb-in]	20398

(Runner Block)Weight

Weight-Block [kg]	2.90
-------------------	------

(Runner Block)Grease Fitting

Grease Fitting Part Number	B-PT 1/8
----------------------------	----------