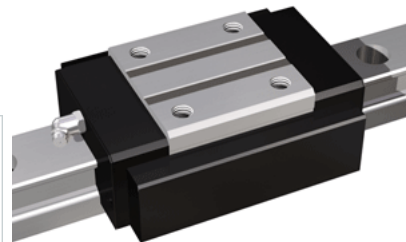
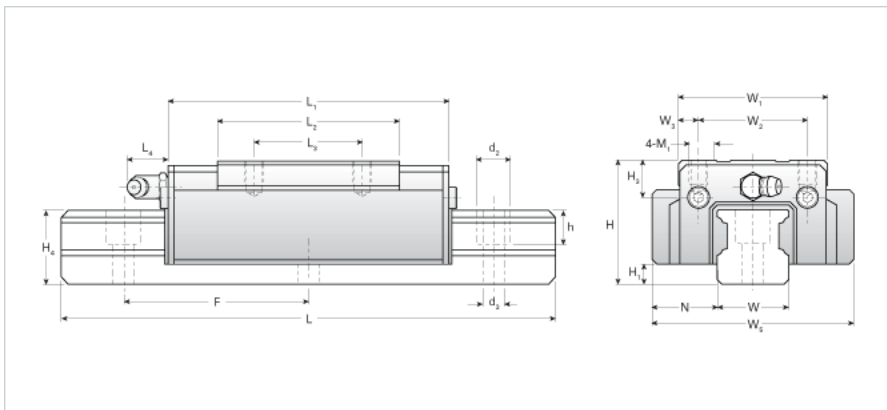


NH25TR Assembly

Call 800-321-7800 or visit us online at www.nookindustries.com to configure and order your NH25TR Assembly today!



Dimensions

H [mm]	40
H1 [mm]	6.5
N [mm]	12.5

Metric Profile Rail

(Rail)Details

Size [mm]	25
Type	Standard

(Rail)Dimensions

d2 [mm]	11
d3 [mm]	7
h [mm]	11
H4 [mm]	24
F [mm]	60
W [mm]	23
Maximum Length [mm]	4000

(Rail)Weight

Weights-Rail [kg/m]	3.2
---------------------	-----

Metric Runner Block, Heavy Load, High Speed, 4 Tapped Holes On Runner Block

(Runner Block)Details

Size [mm]	25
-----------	----

(Runner Block)Dimensions

H3 [mm]	8
L1 [mm]	97
L2 [mm]	59
L3 [mm]	35
L4 [mm]	10
M1 x l	M6X8
W1 [mm]	48
W2 [mm]	35
W3 [mm]	6.5
W5 [mm]	66

(Runner Block)Forces and Torques

Basic Load Ratings C [kN]	20.00
Basic Load Ratings C [lbf]	4496
Basic Load Ratings C0 [kN]	34.41
Basic Load Ratings C0 [lbf]	7736
Static Moment Ratings-Ma [kN-m]	0.27
Static Moment Ratings-Ma [lb-in]	2430
Static Moment Ratings-Mb [kN-m]	0.27
Static Moment Ratings-Mb [lb-in]	2430
Static Moment Ratings-Mc [kN-m]	0.44
Static Moment Ratings-Mc [lb-in]	3906

(Runner Block)Weight

Weight-Block [kg]	0.54
-------------------	------

(Runner Block)Grease Fitting

Grease Fitting Part Number	B-M6F
----------------------------	-------