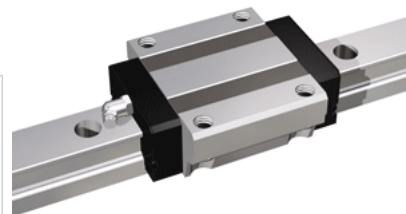
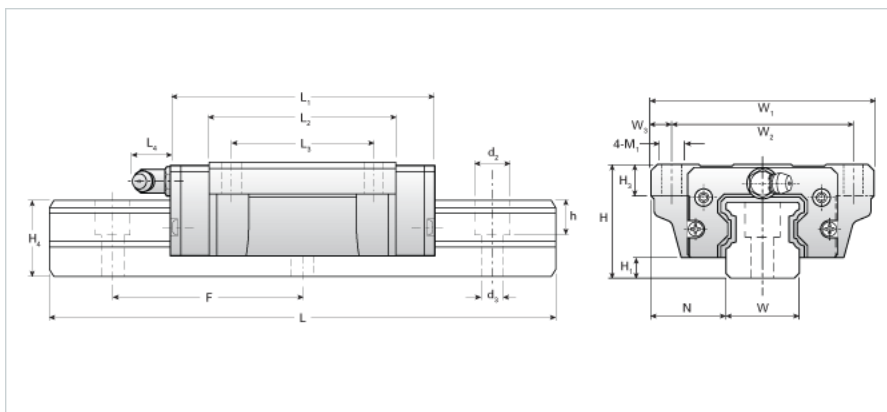


NH20EA Assembly

Call 800-321-7800 or visit us online at www.nookindustries.com to configure and order your NH20EA Assembly today!



Dimensions

| | |
|---------|------|
| H [mm] | 30 |
| H1 [mm] | 5 |
| N [mm] | 21.0 |

Metric Profile Rail (Rail)Details

| | |
|-----------|----------|
| Size [mm] | 20 |
| Type | Standard |

(Rail)Dimensions

| | |
|---------------------|------|
| d2 [mm] | 9.5 |
| d3 [mm] | 6 |
| h [mm] | 11 |
| H4 [mm] | 21 |
| F [mm] | 60 |
| W [mm] | 20 |
| Maximum Length [mm] | 3000 |

(Rail)Weight

| | |
|---------------------|-----|
| Weights-Rail [kg/m] | 2.5 |
|---------------------|-----|

Metric Runner Block, Heavy Load, Flange Type, 4 Tapped Holes (Runner Block)Details

| | |
|-----------|----|
| Size [mm] | 20 |
|-----------|----|

(Runner Block)Dimensions

| | |
|---------|----|
| L1 [mm] | 73 |
| L2 [mm] | 50 |
| L3 [mm] | 40 |
| L4 [mm] | 0 |
| H3 [mm] | 8 |
| W1 [mm] | 63 |
| W2 [mm] | 53 |
| W3 [mm] | 5 |
| M1 | M6 |

(Runner Block)Forces and Torques

| | |
|----------------------------------|-------|
| Basic Load Ratings C [kN] | 13.92 |
| Basic Load Ratings C [lbf] | 3130 |
| Basic Load Ratings C0 [kN] | 23.83 |
| Basic Load Ratings C0 [lbf] | 5157 |
| Static Moment Ratings-Ma [kN-m] | 0.16 |
| Static Moment Ratings-Ma [lb-in] | 1389 |
| Static Moment Ratings-Mb [kN-m] | 0.16 |
| Static Moment Ratings-Mb [lb-in] | 1389 |
| Static Moment Ratings-Mc [kN-m] | 0.26 |
| Static Moment Ratings-Mc [lb-in] | 2344 |

(Runner Block)Weight

| | |
|-------------------|------|
| Weight-Block [kg] | 0.40 |
|-------------------|------|

(Runner Block)Grease Fitting

| | |
|----------------------------|-----------|
| Grease Fitting Part Number | NAS516-1A |
|----------------------------|-----------|