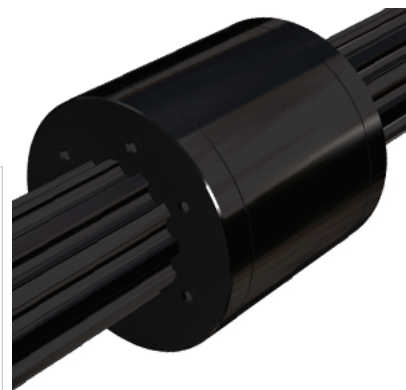
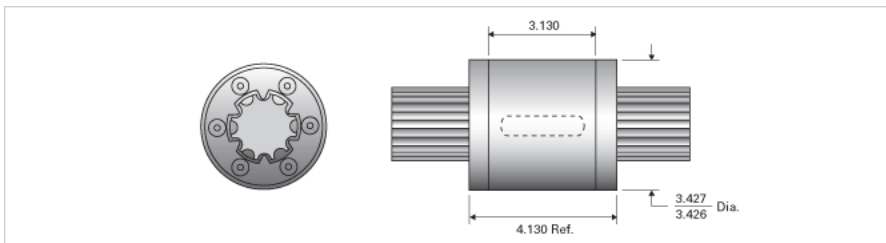


## PowerTorq 2000-6-0312 HPR8946

Call 800-321-7800 or visit us online at [www.nookindustries.com](http://www.nookindustries.com) to configure and order your PowerTorq 2000-6-0312 HPR8946 today!



### Inch Ball Spline Inner Race

#### (Inch Ball Spline Inner Race(1))Product Info

Nominal Diameter [in] 2.000

#### (Inch Ball Spline Inner Race(1))Details

Active Circuits 6

Root Diameter [in] 1.67

#### (Inch Ball Spline Inner Race(1))Part Numbers

12 ft. Part Number SRR6436

2 ft. Part Number

4 ft. Part Number SRR6420

6 ft. Part Number

8 ft. Part Number SRR6428

#### (Inch Ball Spline Inner Race(1))Weight

Inner Race Weight [lb./ft.] 9.9

### Inch High Performance Ball Spline Outer Race

#### (Inch High Performance Ball Spline Outer Race(2))Product Info

Part Number HPR8946

Nominal Diameter [in] 2.000

#### (Inch High Performance Ball Spline Outer Race(2))Details

Active Circuits 6

Nominal Ball Diameter [in] 0.313

Optional Keyway 1/2x7/32x2.50

Ball Return Cast

Balls per Outer Race 144

#### (Inch High Performance Ball Spline Outer Race(2))Weight

Outer Race Weight [lb] 4.48

#### (Inch High Performance Ball Spline Outer Race(2))Performance Specifications

Dynamic Torque [in-lb] 16000

Static Torque [in-lb] 40270