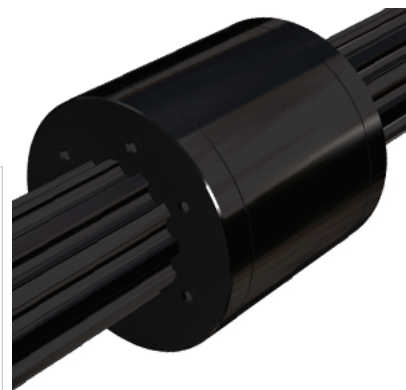
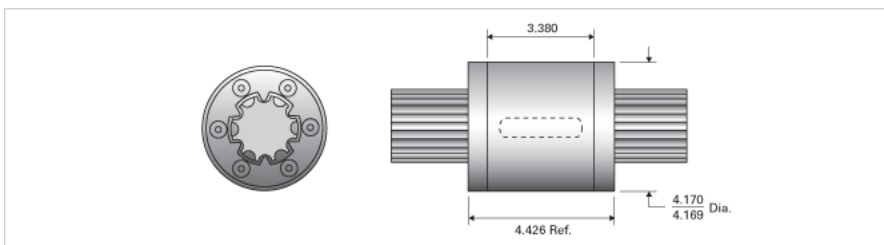


PowerTorq 2500-6-0375 HPR8947

Call 800-321-7800 or visit us online at www.nookindustries.com to configure and order your PowerTorq 2500-6-0375 HPR8947 today!



Inch Ball Spline Inner Race

(Inch Ball Spline Inner Race(1))Product Info

Nominal Diameter [in] 2.500

(Inch Ball Spline Inner Race(1))Details

Active Circuits 6
Root Diameter [in] 2.10

(Inch Ball Spline Inner Race(1))Part Numbers

12 ft. Part Number SRR6484
2 ft. Part Number
4 ft. Part Number SRR6468
6 ft. Part Number
8 ft. Part Number SRR6476

(Inch Ball Spline Inner Race(1))Weight

Inner Race Weight [lb./ft.] 15.8

Inch High Performance Ball Spline Outer Race

(Inch High Performance Ball Spline Outer Race(2))Product Info

Part Number HPR8947
Nominal Diameter [in] 2.500

(Inch High Performance Ball Spline Outer Race(2))Details

Active Circuits 6
Nominal Ball Diameter [in] 0.375
Optional Keyway 1/2x1/4x3.000
Ball Return Cast
Balls per Outer Race 132

(Inch High Performance Ball Spline Outer Race(2))Weight

Outer Race Weight [lb] 6.60

(Inch High Performance Ball Spline Outer Race(2))Performance Specifications

Dynamic Torque [in-lb] 27000
Static Torque [in-lb] 62250