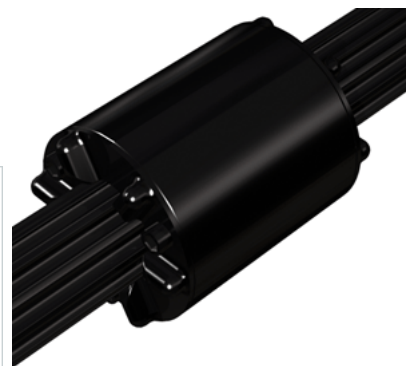
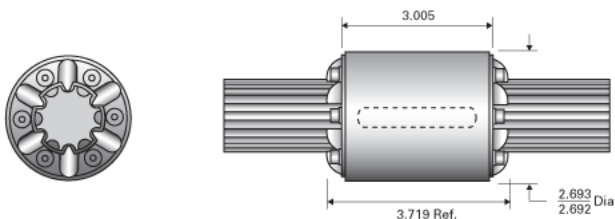


## PowerTorq 1500-6-0250 SOR8945

Call 800-321-7800 or visit us online at [www.nookindustries.com](http://www.nookindustries.com) to configure and order your PowerTorq 1500-6-0250 SOR8945 today!



### Inch Ball Spline Inner Race

#### (Inch Ball Spline Inner Race(1))Product Info

Nominal Diameter [in]	1.500
-----------------------	-------

#### (Inch Ball Spline Inner Race(1))Details

Active Circuits	6
Root Diameter [in]	1.25

#### (Inch Ball Spline Inner Race(1))Part Numbers

12 ft. Part Number	SRR6388
2 ft. Part Number	
4 ft. Part Number	SRR6372
6 ft. Part Number	
8 ft. Part Number	SRR6380

#### (Inch Ball Spline Inner Race(1))Weight

Inner Race Weight [lb./ft.]	5.25
-----------------------------	------

### Inch Standard Performance Ball Spline Outer Race

#### (Inch Standard Performance Ball Spline Outer Race(2))Product Info

Part Number	SOR8945
Nominal Diameter [in]	1.500

#### (Inch Standard Performance Ball Spline Outer Race(2))Details

Active Circuits	6
Nominal Ball Diameter [in]	0.250
Optional Keyway	3/8x3/16x2.00
Ball Return	Stamped
Balls per Outer Race	168

#### (Inch Standard Performance Ball Spline Outer Race(2))Weight

Outer Race Weight [lb]	3.42
------------------------	------

#### (Inch Standard Performance Ball Spline Outer Race(2))Performance Specifications

Dynamic Torque [in-lb]	8400
Static Torque [in-lb]	23170