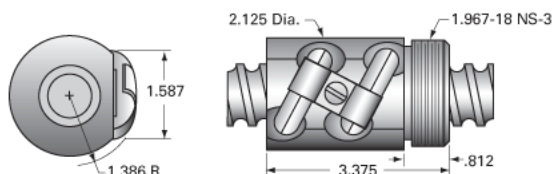


PowerTrac 1171 - 0413 SRT RA, with SBN Ball Nut, Double Circuit

Call 800-321-7800 or visit us online at www.nookindustries.com to configure and order your PowerTrac 1171 - 0413 SRT RA, with SBN Ball Nut, Double



Inch Ball Screw

(Screw)Product Info

Screw Code	1171-0413 SRT RA
Precision	SRT
Screw Material	4150
Thread Direction	RH

(Screw)Details

Ball Circle Diameter [in]	1.171
Lead [in]	0.413
Root Diameter [in]	0.870
End Code for Types 1,2,3,5 [* Journals may show tracings of the thread]	20
End Code for Type 4 [* Journals may show tracings of the thread]	12

(Screw)Performance Specifications

Lead Accuracy +/- [in./ft.]	0.0040
-----------------------------	--------

(Screw)Part Numbers

2 ft. Part Number	
4 ft. Part Number	SRT9569
6 ft. Part Number	
8 ft. Part Number	SRT5035
12 ft. Part Number	SRT5043
16 ft. Part Number	SRT0432
20 ft. Part Number	

(Screw)Weight

Screw Weight [lb./ft.]	2.77
------------------------	------

Inch Ball Nut, for SRT, Standard Accuracy, No Preload, SBN, Standard

(Nut)Product Info

Ball Nut Number	SBN7511
Thread Direction	RH

(Nut)Details

Ball Circle Diameter [in]	1.171
Lead [in]	0.413
Nominal Ball Diameter [in]	0.281
Root diameter [in]	0.870

(Nut)Dimensions

A [in]	
--------	--

(Nut)Forces and Torques

Torque to Raise 1 lb. [in-lb]	0.073
-------------------------------	-------

(Nut)Flange Part Numbers

Flange Part Number	FLG7572
--------------------	---------

(Nut)Wiper Part Numbers

Wiper Kit Part Number	WKB2653
Wiper Kit Felt Part Number	

(Nut)Weight

Nut Weight [lb]	1.90
-----------------	------

(Nut)Performance Specifications

Lead Accuracy +/- [in./ft.]	0.004
Maximum Adjustable Preload [lb]	
Spring Rate x 10 ⁶ [lb./in.]	
Dynamic Load [lb]	3894
Static Load [lb]	22917