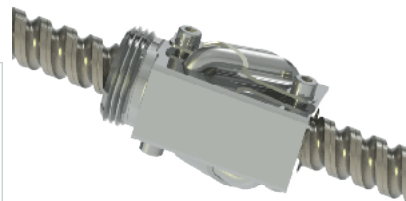
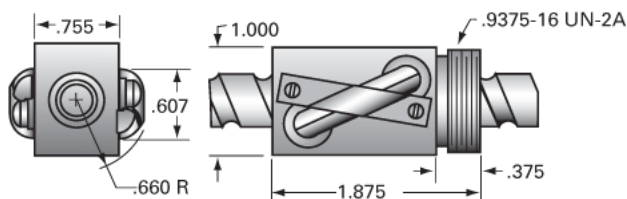


PowerTrac 0500 - 0500 SRT RA, with SBN Ball Nut, Nickel Plated,

Call 800-321-7800 or visit us online at www.nookindustries.com to configure and order your PowerTrac 0500 - 0500 SRT RA, with SBN Ball Nut, Nickel



Inch Ball Screw

(Screw)Product Info

Screw Code	0500-0500 SRT RS
Precision	SRT
Screw Material	17-4 PH Stainless
Thread Direction	RH

(Screw)Details

Ball Circle Diameter [in]	0.500
Lead [in]	0.500
Root Diameter [in]	0.360
End Code for Types 1,2,3,5 [* Journals may show tracings of the thread]	8
End Code for Type 4 [* Journals may show tracings of the thread]	6

(Screw)Performance Specifications

Lead Accuracy +/- [in./ft.]	0.0040
-----------------------------	--------

(Screw)Part Numbers

2 ft. Part Number	SRT6700
4 ft. Part Number	SRT6704
6 ft. Part Number	SRT6846
8 ft. Part Number	
12 ft. Part Number	
16 ft. Part Number	
20 ft. Part Number	

(Screw)Weight

Screw Weight [lb./ft.]	0.50
------------------------	------

Inch Ball Nut, for SRT, Standard Accuracy, No Preload, SBN, Nickel Plated

(Nut)Product Info

Ball Nut Number	SBN9582E
Thread Direction	RH

(Nut)Details

Ball Circle Diameter [in]	0.500
Lead [in]	0.500
Nominal Ball Diameter [in]	0.125
Root diameter [in]	0.360

(Nut)Forces and Torques

Torque to Raise 1 lb. [in.-lb]	0.088
--------------------------------	-------

(Nut)Flange Part Numbers

Flange Part Number	FLG7570
--------------------	---------

(Nut)Wiper Part Numbers

Wiper Kit Part Number	-
-----------------------	---

(Nut)Weight

Nut Weight [lb]	0.27
-----------------	------

(Nut)Performance Specifications

Lead Accuracy +/- [in./ft.]	0.004
Maximum Adjustable Preload [lb]	
Spring Rate x 10 ⁶ [lb./in.]	
Dynamic Load [lb]	786
Static Load [lb]	4131