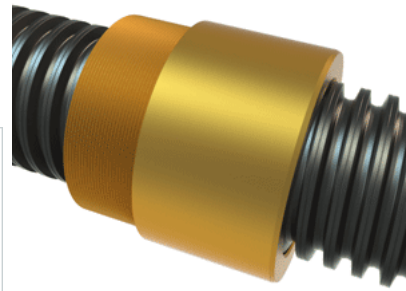


## PowerAC 4 1/2"-1 1/2 RA w/Bronze Nut

Call 800-321-7800 or visit us online at [www.nookindustries.com](http://www.nookindustries.com) to configure and order your PowerAC 4 1/2"-1 1/2 RA w/Bronze Nut today!



### Rolled Inch Acme Screw

#### (Screw)Product Info

Screw Code	452-RA
Thread Direction	RH
Screw Material	4140 Series

#### (Screw)Details

Lead [in]	0.667
Starts	1
Pitch [in]	0.667
Turns Per Inch	1.5
Threads per Inch	1.5
Thread Code	452
Form	2G
End Code for Types 1,2,3,5 [* Journals may show tracings of the thread]	95
End Code for Type 4 [* Journals may show tracings of the thread]	55

#### (Screw)Dimensions

A - Root Diameter Minimum [in]	3.782
D - Nominal Rod Diameter [in]	4.500

#### (Screw)Part Numbers

3 ft. Part Number	
6 ft. Part Number	12452
12 ft. Part Number	13452
20 ft. Part Number	10452

#### (Screw)Performance Specifications

Lead Accuracy +/- [in/in]	0.0006
---------------------------	--------

#### (Screw)Weight

Screw Weight [lb./ft.]	45.00
------------------------	-------

### Inch Acme Nut with Optional Flange

#### (Nut)Product Info

Part Number	20452
Thread Direction	RH
Type	Bronze

#### (Nut)Details

Lead [in]	0.667
Starts	1
Pitch [in]	0.667
Turns Per Inch	1.5
Lash (Maximum Axial) [in]	0.022
Nominal Rod Diameter [in]	4.500
Threads per Inch	1.5
Thread Code	452
Form	2G

#### (Nut)Dimensions

B [in]	5.50
C [in]	6.00
E [in]	2.00
F (n) Dia. [in]	(6) 1.03
F BCD [in]	8.000
G [in]	2.02
H [in]	9.75
J [in]	5.497-12

#### (Nut)Forces and Torques

Torque to Raise 1 lb. [in-lb]	0.379
-------------------------------	-------

#### (Nut)Flange Part Numbers

Flange No-Lash Part Number	73452
Flange Part Number	FLG3307

#### (Nut)Weight

Flange Weight [lb]	26.00
Nut Weight [lb]	25.82

#### (Nut)Performance Specifications

Efficiency [%]	28
----------------	----

Lead Accuracy +/- [in/in]	0.0006
Dynamic Load Capacity [lb]	100000
Static Load Capacity [lb]	320000