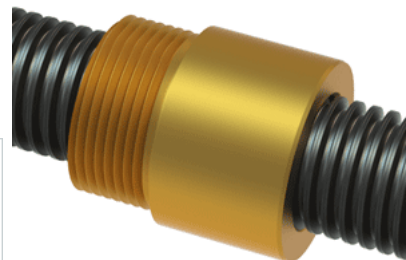


PowerAC 3/4"-10 RA w/Bronze Nut

Call 800-321-7800 or visit us online at www.nookindustries.com to configure and order your PowerAC 3/4"-10 RA w/Bronze Nut today!



Rolled Inch Acme Screw

(Screw)Product Info

Screw Code	070-RA
Thread Direction	RH
Screw Material	4140 Series

(Screw)Details

Lead [in]	0.100
Starts	1
Pitch [in]	0.100
Turns Per Inch	10
Threads per Inch	10
Thread Code	070
Form	2C
End Code for Types 1,2,3,5 [* Journals may show tracings of the thread]	15
End Code for Type 4 [* Journals may show tracings of the thread]	8

(Screw)Dimensions

A - Root Diameter Minimum [in]	0.608
D - Nominal Rod Diameter [in]	0.750

(Screw)Part Numbers

3 ft. Part Number	11070
6 ft. Part Number	12070
12 ft. Part Number	13070
20 ft. Part Number	

(Screw)Performance Specifications

Lead Accuracy +/- [in/in]	0.0003
---------------------------	--------

(Screw)Weight

Screw Weight [lb./ft.]	1.29
------------------------	------

Inch Acme Nut with Optional Flange

(Nut)Product Info

Part Number	20070
Thread Direction	RH
Type	Bronze

(Nut)Details

Lead [in]	0.100
Starts	1
Pitch [in]	0.100
Turns Per Inch	10
Lash (Maximum Axial) [in]	0.007
Nominal Rod Diameter [in]	0.750
Threads per Inch	10
Thread Code	070
Form	2C

(Nut)Dimensions

B [in]	1.25
C [in]	1.13
E [in]	0.50
F (n) Dia. [in]	(4) .266
F BCD [in]	2.090
G [in]	0.53
H [in]	2.63
J [in]	1.000-18

(Nut)Forces and Torques

Torque to Raise 1 lb. [in-lb]	0.064
-------------------------------	-------

(Nut)Flange Part Numbers

Flange No-Lash Part Number	73262
Flange Part Number	70262

(Nut)Weight

Flange Weight [lb]	0.78
Nut Weight [lb]	0.22

(Nut)Performance Specifications

Efficiency [%]	25
----------------	----

Lead Accuracy +/- [in/in]	0.0003
Dynamic Load Capacity [lb]	2812
Static Load Capacity [lb]	9000