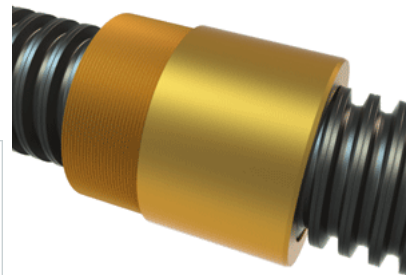
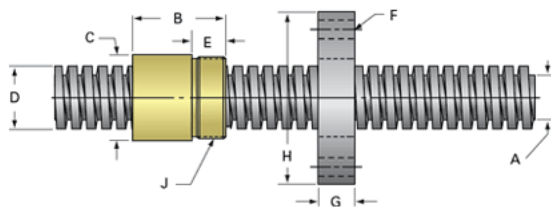


PowerAC 3 3/4"-1 1/2 RA w/Bronze Nut

Call 800-321-7800 or visit us online at www.nookindustries.com to configure and order your PowerAC 3 3/4"-1 1/2 RA w/Bronze Nut today!



Rolled Inch Acme Screw

(Screw)Product Info

Screw Code	372-RA
Thread Direction	RH
Screw Material	4140 Series

(Screw)Details

Lead [in]	0.667
Starts	1
Pitch [in]	0.667
Turns Per Inch	1.5
Threads per Inch	1.5
Thread Code	372
Form	2G
End Code for Types 1,2,3,5 [* Journals may show tracings of the thread]	75
End Code for Type 4 [* Journals may show tracings of the thread]	48

(Screw)Dimensions

A - Root Diameter Minimum [in]	3.009
D - Nominal Rod Diameter [in]	3.750

(Screw)Part Numbers

3 ft. Part Number	
6 ft. Part Number	12372
12 ft. Part Number	13372
20 ft. Part Number	10372

(Screw)Performance Specifications

Lead Accuracy +/- [in/in]	0.0006
---------------------------	--------

(Screw)Weight

Screw Weight [lb./ft.]	38.30
------------------------	-------

Inch Acme Nut with Optional Flange

(Nut)Product Info

Part Number	20372
Thread Direction	RH
Type	Bronze

(Nut)Details

Lead [in]	0.667
Starts	1
Pitch [in]	0.667
Turns Per Inch	1.5
Lash (Maximum Axial) [in]	0.020
Nominal Rod Diameter [in]	3.750
Threads per Inch	1.5
Thread Code	372
Form	2G

(Nut)Dimensions

B [in]	5.50
C [in]	5.00
E [in]	2.00
F (n) Dia. [in]	(4) 1.06
F BCD [in]	7.000
G [in]	2.02
H [in]	9.00
J [in]	4.750-12

(Nut)Forces and Torques

Torque to Raise 1 lb. [in-lb]	0.345
-------------------------------	-------

(Nut)Flange Part Numbers

Flange No-Lash Part Number	73372
Flange Part Number	70775

(Nut)Weight

Flange Weight [lb]	23.82
Nut Weight [lb]	16.89

(Nut)Performance Specifications

Efficiency [%]	30
----------------	----

Lead Accuracy +/- [in/in]	0.0006
Dynamic Load Capacity [lb]	81000
Static Load Capacity [lb]	260000