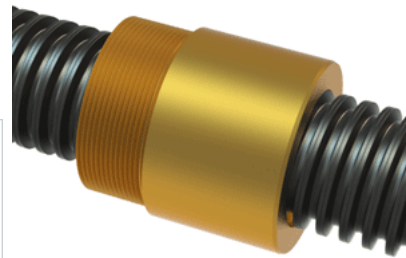


PowerAC 1 1/2"-4 LA w/Bronze Nut

Call 800-321-7800 or visit us online at www.nookindustries.com to configure and order your PowerAC 1 1/2"-4 LA w/Bronze Nut today!



Rolled Inch Acme Screw

(Screw)Product Info

| | |
|------------------|-------------|
| Screw Code | 154-LA |
| Thread Direction | LH |
| Screw Material | 4140 Series |

(Screw)Details

| | |
|---|-------|
| Lead [in] | 0.250 |
| Starts | 1 |
| Pitch [in] | 0.250 |
| Turns Per Inch | 4 |
| Threads per Inch | 4 |
| Thread Code | 154 |
| Form | 2C |
| End Code for Types 1,2,3,5 [* Journals may show tracings of the thread] | 30 |
| End Code for Type 4 [* Journals may show tracings of the thread] | 19 |

(Screw)Dimensions

| | |
|--------------------------------|-------|
| A - Root Diameter Minimum [in] | 1.196 |
| D - Nominal Rod Diameter [in] | 1.500 |

(Screw)Part Numbers

| | |
|--------------------|-------|
| 3 ft. Part Number | 51154 |
| 6 ft. Part Number | 52154 |
| 12 ft. Part Number | 53154 |
| 20 ft. Part Number | |

(Screw)Performance Specifications

| | |
|---------------------------|--------|
| Lead Accuracy +/- [in/in] | 0.0003 |
|---------------------------|--------|

(Screw)Weight

| | |
|------------------------|------|
| Screw Weight [lb./ft.] | 4.99 |
|------------------------|------|

Inch Acme Nut with Optional Flange

(Nut)Product Info

| | |
|------------------|--------|
| Part Number | 80154 |
| Thread Direction | LH |
| Type | Bronze |

(Nut)Details

| | |
|---------------------------|-------|
| Lead [in] | 0.250 |
| Starts | 1 |
| Pitch [in] | 0.250 |
| Turns Per Inch | 4 |
| Lash (Maximum Axial) [in] | 0.010 |
| Nominal Rod Diameter [in] | 1.500 |
| Threads per Inch | 4 |
| Thread Code | 154 |
| Form | 2C |

(Nut)Dimensions

| | |
|-----------------|----------|
| B [in] | 2.30 |
| C [in] | 2.13 |
| E [in] | 0.81 |
| F (n) Dia. [in] | (4) .397 |
| F BCD [in] | 3.440 |
| G [in] | 0.83 |
| H [in] | 4.20 |
| J [in] | 1.967-18 |

(Nut)Forces and Torques

| | |
|-------------------------------|-------|
| Torque to Raise 1 lb. [in-lb] | 0.133 |
|-------------------------------|-------|

(Nut)Flange Part Numbers

| | |
|----------------------------|---------|
| Flange No-Lash Part Number | 73420 |
| Flange Part Number | FLG7572 |

(Nut)Weight

| | |
|--------------------|------|
| Flange Weight [lb] | 3.19 |
| Nut Weight [lb] | 1.53 |

(Nut)Performance Specifications

| | |
|----------------|----|
| Efficiency [%] | 30 |
|----------------|----|

| | |
|----------------------------|--------|
| Lead Accuracy +/- [in/in] | 0.0003 |
| Dynamic Load Capacity [lb] | 11250 |
| Static Load Capacity [lb] | 36000 |