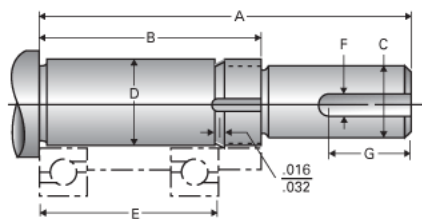


Type 3L, End Code 35

Call 800-321-7800 or visit us online at www.nookindustries.com to configure and order your Type 3L, End Code 35 today!



Product Info

Nominal Bearing Journal Size

35

Dimensions

C Maximum [in]	1.250
C Minimum [in]	1.249
D Maximum [in]	1.3784
D Minimum [in]	1.3779
F [in]	0.25
G [in]	1.25
Typical Journal for Single Bearing A [in]	5.34
Typical Journal for Single Bearing B [in]	3.24
Typical Journal for Single Bearing E [in]	2.676
Lock Nut	N-07
Lock Washer	W-07