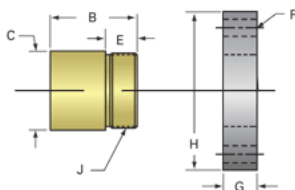
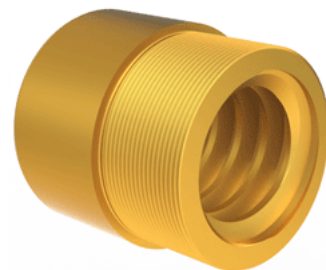


Bronze Trapezoidal Nut 20907

Call 800-321-7800 or visit us online at www.nookindustries.com to configure and order your Bronze Trapezoidal Nut 20907 today!



Product Info

Part Number	20907
Thread Direction	RH
Type	Bronze

Details

Diameter	65
Lead [mm]	12
Starts	1
Pitch [mm]	12
Lash (Maximum Axial in) [mm]	0.42
Nominal Rod Diameter	65
Thread Code	907

Dimensions

B [mm]	85.0
C [mm]	85.0
E [mm]	35.00
F (n) Dia. [mm]	(4) 17.00
F BCD [mm]	120.00
G [mm]	36.0
H [mm]	150.0
J [mm]	M80x2

Forces and Torques

Torque to Raise 1 kN [Nm]	5.775
---------------------------	-------

Flange Part Numbers

Flange Part Number	72007
--------------------	-------

Weight

Flange Weight [kg]	3.30
Nut Weight [g]	2100

Performance Specifications

Efficiency [%]	33
Lead Accuracy +/- [mm/25mm]	6.25
Dynamic Load Capacity [N]	145651
Static Load Capacity [N]	466084