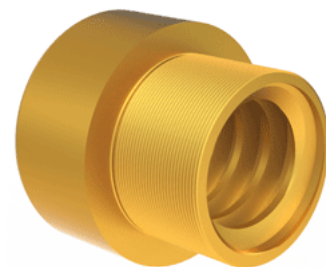
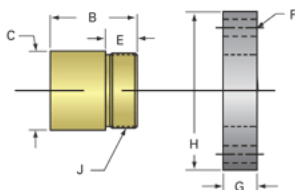


## Bronze Trapezoidal Nut 20906

Call 800-321-7800 or visit us online at [www.nookindustries.com](http://www.nookindustries.com) to configure and order your Bronze Trapezoidal Nut 20906 today!



### Product Info

Part Number	20906
Thread Direction	RH
Type	Bronze

### Details

Diameter	55
Lead [mm]	12
Starts	1
Pitch [mm]	12
Lash (Maximum Axial in) [mm]	0.42
Nominal Rod Diameter	55
Thread Code	906

### Dimensions

B [mm]	75.0
C [mm]	80.0
E [mm]	25.00
F (n) Dia. [mm]	(4) 17.00
F BCD [mm]	112.00
G [mm]	26.0
H [mm]	142.0
J [mm]	M72x2

### Forces and Torques

Torque to Raise 1 kN [Nm]	5.131
---------------------------	-------

### Flange Part Numbers

Flange Part Number	72006
--------------------	-------

### Weight

Flange Weight [kg]	2.20
Nut Weight [g]	1900

### Performance Specifications

Efficiency [%]	37
Lead Accuracy +/- [mm/25mm]	6.25
Dynamic Load Capacity [N]	104287
Static Load Capacity [N]	333718