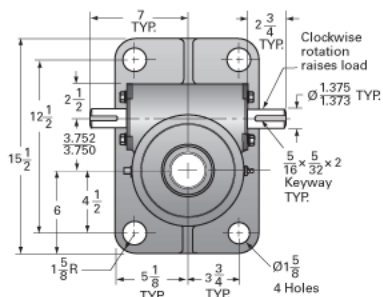
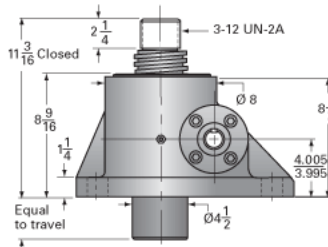
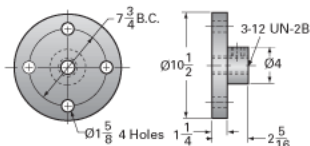


ActionJac 35SS-MSJ-U 10 2/3:1

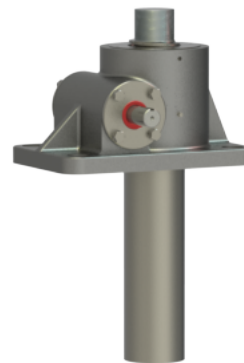
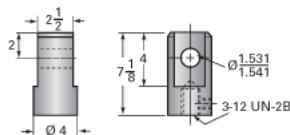
Call 800-321-7800 or visit us online at www.nookindustries.com to configure and order your ActionJac 35SS-MSJ-U 10 2/3:1 today!



Top Plate (optional): 9000-SS-13



Clevis End (optional): 9001-SS-16



Details

| | |
|-------------------------------|----------|
| Capacity [Ton] | 11.66 |
| Gear Ratio | 10 2/3:1 |
| Turns of Worm per Inch Travel | 16 |
| Torque to Raise 1 lb. [in-lb] | 0.0493 |
| Lifting Screw Diameter [in] | 3.75 |
| Screw Lead [in] | 0.667 |
| Root Diameter [in] | 3.083 |
| Tare Drag Torque [in-lb] | 50 |

Performance Specifications

| | |
|------------------------------|--------------------|
| Maximum Allowable Input [hp] | 11.00 |
| Maximum Input Torque [in-lb] | 1150 |
| Maximum Load at 1750 RPM | 8035 |
| Starting Torque | 2 x Running Torque |

Weight

| | |
|-------------------------|------|
| Base 0 Travel [lb] | 165 |
| Per Inch of Travel [lb] | 3.50 |
| Grease [lb] | 3.5 |