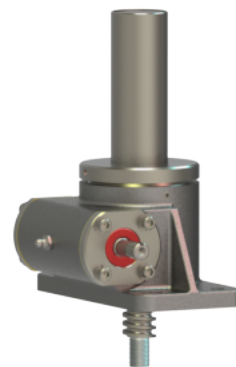
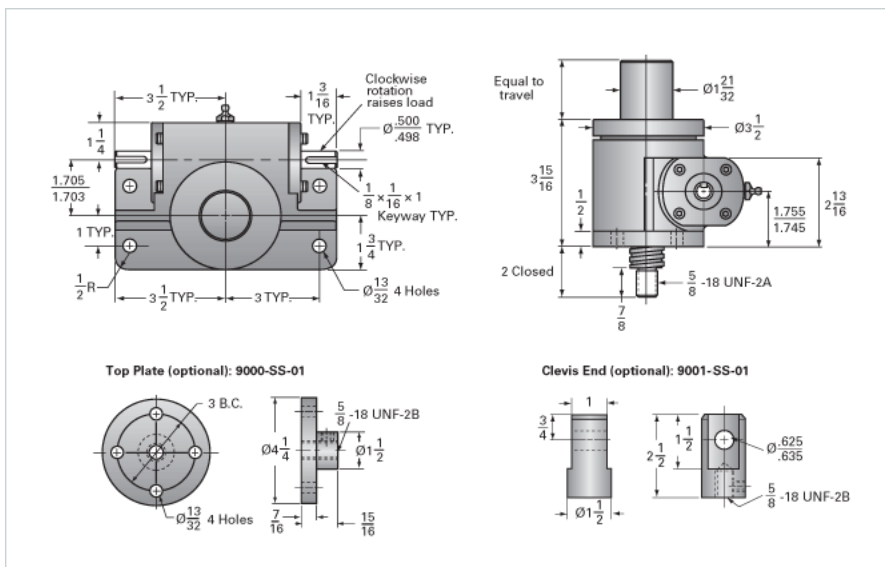




Call 800-321-7800 or visit us online at [www.nookindustries.com](http://www.nookindustries.com) to configure and order your ActionJac 2SS-MSJ-I 24:1 today!



Capacity [Ton]	0.66
Gear Ratio	24:1
Turns of Worm per Inch Travel	96
Torque to Raise 1 lb. [in-lb]	0.0150
Lifting Screw Diameter [in]	1.00
Screw Lead [in]	0.250
Root Diameter [in]	0.698
Tare Drag Torque [in-lb]	4
<b>Performance Specifications</b>	
Maximum Allowable Input [hp]	0.50
Maximum Input Torque [in-lb]	14
Maximum Load at 1750 RPM	1320
Starting Torque	2 x Running Torque
<b>Weight</b>	
Base 0 Travel [lb]	17
Per Inch of Travel [lb]	0.50
Grease [lb]	0.5