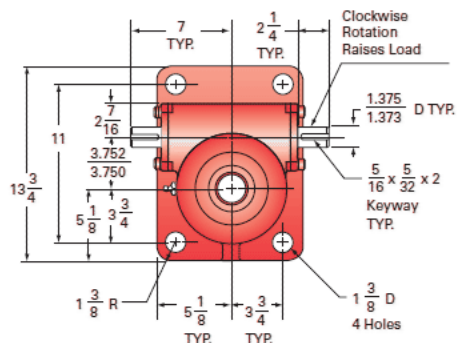
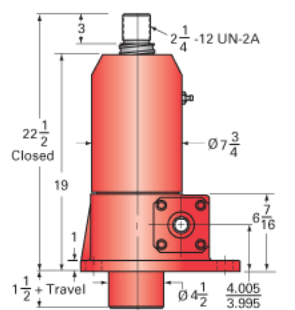




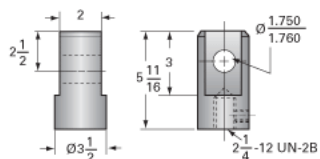
Call 800-321-7800 or visit us online at [www.nookindustries.com](http://www.nookindustries.com) to configure and order your ActionJac 30HL-BSJ-U 32:1 today!



Technical drawing of a 6-hole circular plate. The top view shows a circle with 6 holes arranged in a circular pattern. Dimensions include: 6 B.C. (Bore Center),  $\varnothing 1 \frac{1}{4}$  Holes, and  $\varnothing 8 \frac{1}{2}$ . The side view shows a plate with a thickness of  $2 \frac{1}{4}$  UN-2B, a central hole of  $3 \frac{1}{2}$  D, and a distance of  $3 \frac{1}{16}$  from the edge to the hole center.



Clevis End (optional): 9001-00-07



Capacity [Ton]	30
Gear Ratio	32:1
Turns of Worm per Inch Travel	21.33
Torque to Raise 1 lb. [in-lb]	0.0191
Lifting Screw Diameter [in]	3.00
Screw Lead [in]	1.500
Root Diameter [in]	2.480
BackDrive Holding Torque [ft-lb]	15
Tare Drag Torque [in-lb]	60

Maximum Allowable Input [hp]	3.50
Maximum Input Torque [in-lb]	1144
Maximum Worm Speed at Rated Load [rpm]	193
Maximum Load at 1750 RPM [lb]	6600
Starting Torque	1.5 x Running Torque

Base 0 Travel [lb]	220
Per Inch of Travel [lb]	2.40
Grease [lb]	3.5