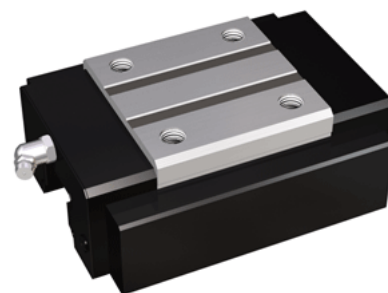
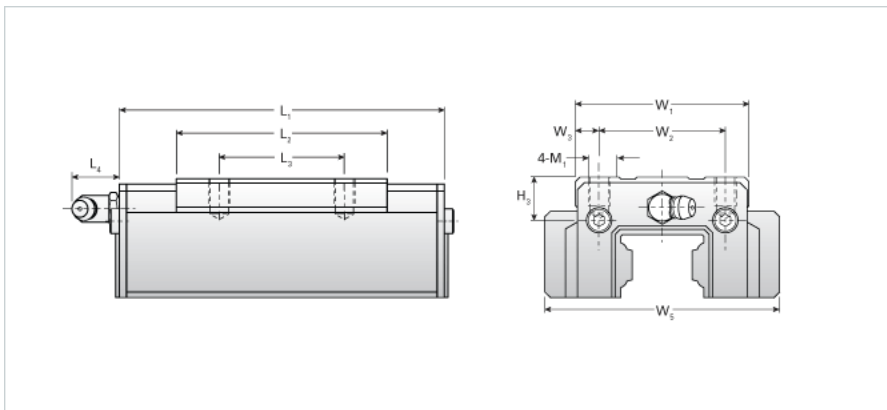


NH45TR

Call 800-321-7800 or visit us online at www.nookindustries.com to configure and order your NH45TR today!



Details

| | |
|-----------|----|
| Size [mm] | 45 |
|-----------|----|

Dimensions

| | |
|---------|--------|
| H3 [mm] | 15 |
| L1 [mm] | 158 |
| L2 [mm] | 102 |
| L3 [mm] | 60 |
| L4 [mm] | 15 |
| M1 x l | M10X17 |
| W1 [mm] | 86 |
| W2 [mm] | 60 |
| W3 [mm] | 13 |
| W5 [mm] | 112 |

Forces and Torques

| | |
|----------------------------------|-------|
| Basic Load Ratings C [kN] | 60.20 |
| Basic Load Ratings C [lbf] | 13532 |
| Basic Load Ratings C0 [kN] | 95.71 |
| Basic Load Ratings C0 [lbf] | 21510 |
| Static Moment Ratings-Ma [kN-m] | 1.30 |
| Static Moment Ratings-Ma [lb-in] | 11544 |
| Static Moment Ratings-Mb [kN-m] | 1.30 |
| Static Moment Ratings-Mb [lb-in] | 11544 |
| Static Moment Ratings-Mc [kN-m] | 2.30 |
| Static Moment Ratings-Mc [lb-in] | 20398 |

Weight

| | |
|-------------------|------|
| Weight-Block [kg] | 2.80 |
|-------------------|------|

Grease Fitting

| | |
|----------------------------|----------|
| Grease Fitting Part Number | B-PT 1/8 |
|----------------------------|----------|