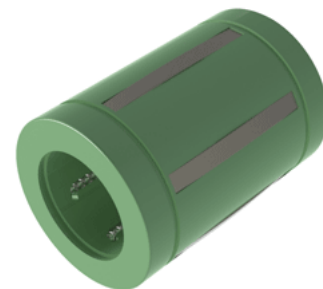
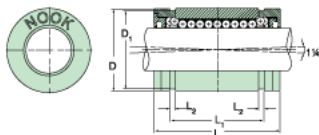


Excel XLMC30

Call 800-321-7800 or visit us online at www.nookindustries.com to configure and order your Excel XLMC30 today!



Product Info

Nominal Shaft Diameter [mm]	30
Part Number	XLMC30

Dimensions

D1 [mm]	45.5
L [mm]	68
L1 [mm]	51.8
L2 [mm]	1.9
Housing Bore Diameter D Maximum [mm]	47.15
Housing Bore Diameter D Minimum [mm]	47.05

Performance Specifications

Number of Ball Circuits	5
Dynamic Load C Maximum [N]	3330
Dynamic Load C Normal [N]	3200
Static Load C [N]	2800