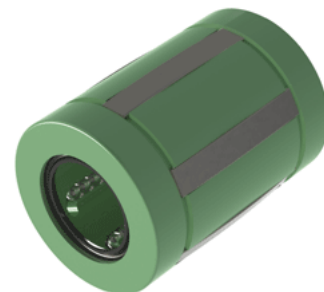
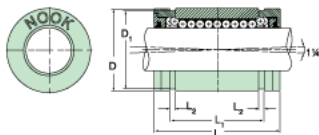


Excel XLMC20UU

Call 800-321-7800 or visit us online at www.nookindustries.com to configure and order your Excel XLMC20UU today!



Product Info

| | |
|-----------------------------|----------|
| Nominal Shaft Diameter [mm] | 20 |
| Part Number | XLMC20UU |

Dimensions

| | |
|--------------------------------------|-------|
| D1 [mm] | 30.3 |
| L [mm] | 45 |
| L1 [mm] | 31.3 |
| L2 [mm] | 1.65 |
| Housing Bore Diameter D Maximum [mm] | 32.10 |
| Housing Bore Diameter D Minimum [mm] | 32.05 |

Performance Specifications

| | |
|----------------------------|------|
| Number of Ball Circuits | 5 |
| Dynamic Load C Maximum [N] | 1560 |
| Dynamic Load C Normal [N] | 1500 |
| Static Load C [N] | 1250 |