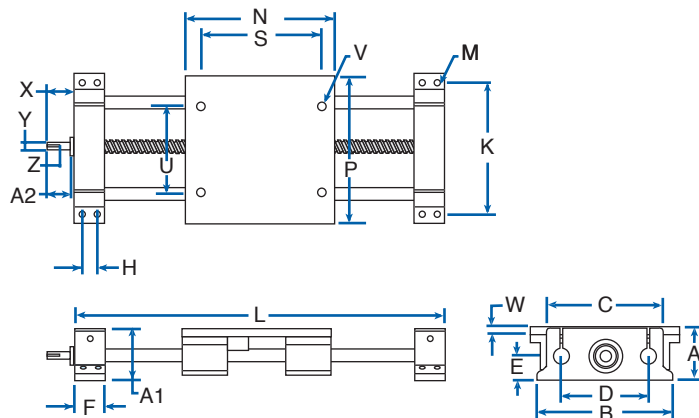


**SERIES 212: DOUBLE SHAFT END SUPPORTED SYSTEM  
WITH BALL SCREW ASSEMBLY AND CARRIAGE**



**BENEFITS**

- Adaptable to any drive system
- Flexible design
- Use where end supported systems are needed
- Pre-aligned, easy installation

**COMPONENTS**

- 4 Linear bearing pillow blocks
- 2 Integrated end supports
- 2 HG linear shafts
- 1 carriage
- 1 ball screw assembly

**DOUBLE SHAFT END SUPPORT SYSTEM WITH BALL SCREW ASSEMBLY AND CARRIAGE**

PART NO.	NOM. SHAFT DIA.	LOAD (lbf)*	BALL SCREW DIA.**	DIMENSION (inches)												MIN. "L" DIMENSION (in.)
				A ± .003	A1	B	C	D	E	F	H ±.010	K ±.010	M			
													BOLT	HOLE		
212-08-LXX	1/2	700	1/2	2.187	2.38	5.30	4.25	3.25	1.125	1.50	.75	4.80	#8	.19	TRAVEL+8.50	
212-12-LXX	3/4	1,624	3/4	2.937	2.88	7.20	6.00	4.50	1.500	2.00	1.00	6.70	#10	.22	TRAVEL+11.50	
212-16-LXX	1	2,900	1	3.437	3.45	8.75	7.25	5.50	1.750	2.20	1.20	8.00	1/4	.28	TRAVEL+13.40	
212-24-LXX	1-1/2	5,504	1-1/2	5.000	4.97	13.00	10.75	8.00	2.500	2.80	1.50	12.00	5/16	.34	TRAVEL+18.60	

\* Based on horizontal load, equally distributed to each bearing with a travel life of 2 million inches. XX = shaft length - see page 241.

\*\*Refer to page 248 for screw selection.

**MOUNTING CARRIAGE TOP FOR 212 & 252**

PART NO.	DIMENSION (inches)					
	N	P	S	U	V	W
2X2-08-LXX	5.50	5.50	4.50	3.25	1/4-20	.38
2X2-12-LXX	7.50	7.50	6.00	4.50	5/16-18	.50
2X2-16-LXX	9.00	9.00	7.00	5.50	3/8-16	.50
2X2-24-LXX	13.00	13.00	10.00	8.00	1/2-13	.75

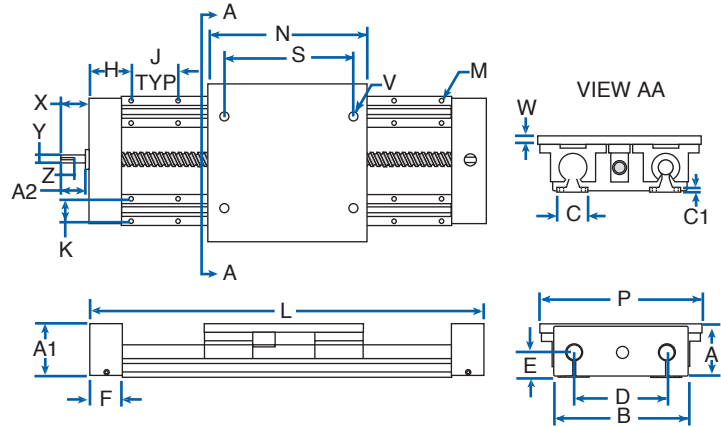
**SCREW & SHAFT EXTENSION FOR 212 & 252**

PART NO.	DIMENSION (inches)				
	Screw Size	X	Y	Z	A2
2X2-08-LXX	0500-0500 SRT	1.00	.250	.51 x .095	.665
2X2-12-LXX	0750-0200 SRT	1.50	.500	.81 x .140	1.02
2X2-16-LXX	1000-1000 SRT	1.74	.625	1.03 x .188	1.26
2X2-24-LXX	1500-1000 SRT	2.32	.750	1.41 x .188	1.657

PRECISION LINEAR SLIDE SYSTEMS TECHNICAL DATA

**SERIES 252 SLIDE SYSTEMS**

**SERIES 252: DOUBLE SHAFT FULLY SUPPORTED SYSTEM WITH END SUPPORTS, BALL SCREW ASSEMBLY AND CARRIAGE**



**BENEFITS**

- Adaptable to any drive system
- Flexible design
- Use where fully supported systems are needed
- Pre-aligned, easy installation

**COMPONENTS**

- 4 Linear bearing pillow blocks (open)
- 2 Integrated end supports
- 2 HG linear shafts
- 1 carriage, 1 ball screw assembly
- 2 shaft support rails

**DOUBLE SHAFT FULLY SUPPORTED SYSTEM WITH END SUPPORTS, BALL SCREW ASS'Y & CARRIAGE**

PART NO.	NOM. SHAFT DIA.	LOAD (lbf)*	BALL SCREW	A ±.003	DIMENSION (inches)												MIN. "L" DIMENSION (in.)
					A1	B	D	E	F	C	C1	**H	J±.010	K±.010	M		
															BOLT	HOLE	
252-08-LXX	1/2	608	.50 - .50	2.187	2.13	4.25	3.25	1.125	1.50	1.50	.187	2.00	4.00	1.00	#6	.17	TRAVEL+8.50
252-12-LXX	3/4	1,584	.75 - .20	2.938	2.75	6.00	4.50	1.500	2.00	1.75	.250	3.00	6.00	1.25	#10	.22	TRAVEL+11.50
252-16-LXX	1	2,844	1.00 - 1.00	3.438	3.25	7.25	5.50	1.750	2.20	2.13	.250	3.00	6.00	1.50	1/4	.28	TRAVEL+13.40
252-24-LXX	1-1/2	5,384	1.50 - 1.00	5.000	4.88	10.75	8.00	2.500	2.80	3.00	.375	4.00	8.00	2.25	3/8	.41	TRAVEL+18.60

\*Based on horizontal load, equally distributed to each bearing with a travel life of 2 million inches

\*\* For 18", 30" & 42" std. lengths, H=3.00  
If non-standard length "H" is symmetrical

**DOUBLE SHAFT SYSTEM STANDARD LENGTH FOR 212 & 252**

PART NO.	18"	24"	30"	32"	36"	40"	42"	48"	54"	56"	60"	64"	66"	72"
2X2-08-LXX	■	■	■		■		●	●						
2X2-12-LXX	■	■	■		■		■	■						
2X2-16-LXX	■	■	■		■		■	■	■		■		■	■
2X2-24-LXX		■		■		■		■		■		■		■

● System 252 only

PRECISION LINEAR SLIDE SYSTEMS TECHNICAL DATA