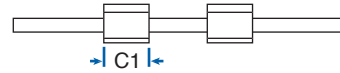
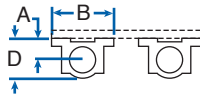
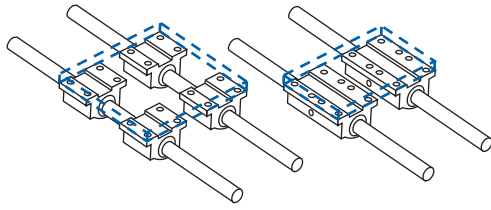
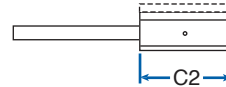


**SERIES 112: DOUBLE SHAFT UNSUPPORTED SYSTEM**



Double Shaft Unsupported with 4 Pillow Blocks



Double Shaft Unsupported with 2 Twin Pillow Blocks

**DOUBLE SHAFT UNSUPPORTED WITH 4 PILLOW BLOCKS**

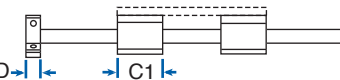
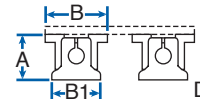
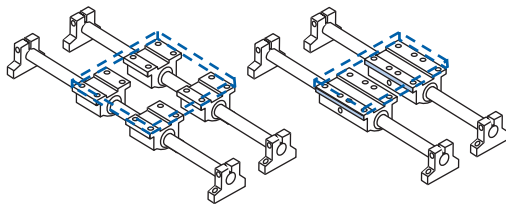
PART NO.	NOM. SHAFT DIA. (in.)	LOAD (lbf)*		DIMENSION (inches)				PILLOW BLOCK**
		MAX/SYSTEM	MAX/BLOCK	A ±.001	B	C1	D	
112-06-SXX	3/8	272	68	0.500	1.75	1.31	0.94	XEP-6
112-08-SXX	1/2	700	175	0.687	2.00	1.69	1.25	XEP-8
112-12-SXX	3/4	1,624	406	0.937	2.75	2.06	1.75	XEP-12
112-16-SXX	1	2,900	725	1.187	3.25	2.81	2.19	XEP-16
112-24-SXX	1-1/2	5,504	1,376	1.750	4.75	4.00	3.25	XEP-24

**DOUBLE SHAFT UNSUPPORTED WITH 2 TWIN PILLOW BLOCKS**

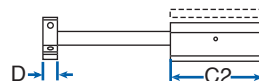
PART NO.	NOM. SHAFT DIA. (in.)	LOAD (lbf)*		DIMENSION (inches)				PILLOW BLOCK**
		MAX/SYSTEM	MAX/BLOCK	A ±.001	B	C2	D	
112-06-TXX	3/8	272	136	0.500	1.75	2.75	0.94	TEP-6
112-08-TXX	1/2	700	350	0.687	2.00	3.50	1.25	TEP-8
112-12-TXX	3/4	1,624	812	0.937	2.75	4.50	1.75	TEP-12
112-16-TXX	1	2,900	1,450	1.187	3.25	6.00	2.19	TEP-16
112-24-TXX	1-1/2	5,504	2,752	1.750	4.75	9.00	3.25	TEP-24

\* Based on horizontal load, equally distributed to each bearing with a travel life of 2 million inches. \*\* See pages 231-232 for details. XX = shaft length - see page 241.

**SERIES 122: DOUBLE SHAFT END SUPPORTED SYSTEM**



Double Shaft End Supported with 4 Pillow Blocks



Double Shaft End Supported with 2 Twin Pillow Blocks

**DOUBLE SHAFT END SUPPORTED WITH 4 PILLOW BLOCKS**

PART NO.	NOM. SHAFT DIA. (in.)	LOAD (lbf)*		DIMENSION (inches)					PILLOW BLOCK**	END SUPPORT*
		MAX/SYSTEM	MAX/BLOCK	A ±.003	B	B1	C1	D		
122-06-SXX	3/8	272	68	1.250	1.75	1.63	1.31	0.56	XEP-6	NSB-6
122-08-SXX	1/2	700	175	1.687	2.00	2.00	1.69	0.63	XEP-8	NSB-8
122-12-SXX	3/4	1,624	406	2.187	2.75	2.75	2.06	0.75	XEP-12	NSB-12
122-16-SXX	1	2,900	725	2.687	3.25	3.25	2.81	1.00	XEP-16	NSB-16
122-24-SXX	1-1/2	5,504	1,376	3.750	4.75	4.75	4.00	1.25	XEP-24	NSB-24

**DOUBLE SHAFT END SUPPORTED WITH 2 TWIN PILLOW BLOCKS**

PART NO.	NOM. SHAFT DIA. (in.)	LOAD (lbf)*		DIMENSION (inches)					MAX. STROKE LENGTH (in.)	PILLOW BLOCK**	END SUPPORT*
		MAX/SYSTEM	MAX/BLOCK	A ±.003	B	B1	C2	D			
122-06-TXX	3/8	272	136	1.250	1.75	1.63	2.75	0.56	L-(3.88)	TEP-6	NSB-6
122-08-TXX	1/2	700	350	1.687	2.00	2.00	3.50	0.63	L-(4.75)	TEP-8	NSB-8
122-12-TXX	3/4	1,624	812	2.187	2.75	2.75	4.50	0.75	L-(6.00)	TEP-12	NSB-12
122-16-TXX	1	2,900	1,450	2.687	3.25	3.25	6.00	1.00	L-(8.00)	TEP-16	NSB-16
122-24-TXX	1-1/2	5,504	2,752	3.750	4.75	4.75	9.00	1.25	L-(11.50)	TEP-24	NSB-24

\* Based on horizontal load, equally distributed to each bearing with a travel life of 2 million inches. \*\* See pages 231-232 for details. XX = shaft length - see page 241.

The specifications and data in this publication are believed to be accurate and reliable. However, it is the responsibility of the product user to determine the suitability of Nook Industries products for a specific application. While defective products will be replaced without charge if promptly returned, no liability is assumed beyond such replacement.