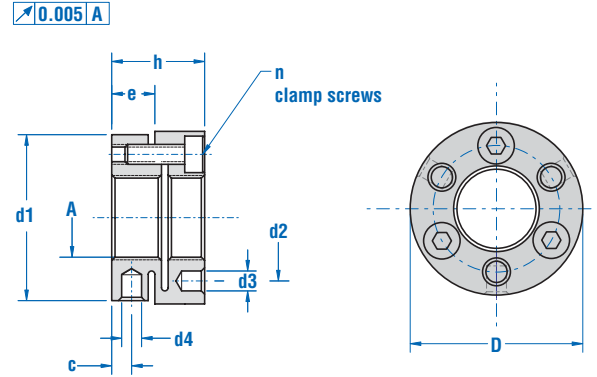


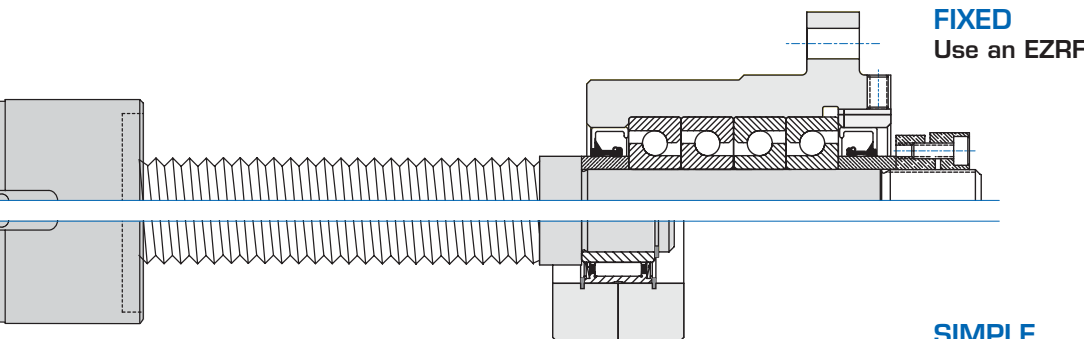
MKR locknuts
for **NRS 15x2** > **75x30**

Conventional locknuts may not be suitable in a typical roller screw application due to the high axial load generated. Nook series MKR locknuts are designed to carry high axial forces while minimizing the rotational inertia, an important benefit in high dynamic applications. MKR locknuts are designed to carry high axial load, have high loosening torque and are manufactured with high accuracy to optimize the load on the thread interface.



Part No. Size x Pitch	Roller Screw	Dimensions in mm								Clamp Screws			Allowable Axial Load	
		D	h	e	d1	d2	d3	d4	c	size	qty	n	Tightening Torque N•m	Dyn. kN
MKR 12x1	NRS 15	26	14	6.5	25	19	3.2	3	3	M3 x 10	3	2	14	19
MKR 15x1	NRS 20	33	16	7	31	23.5	4.3	4	3	M4 x 10	3	2.9	19	25
MKR 17x1	NRS 21	35	18	-	-	25.5	4.3	4	5	M4 x 12	4	2.9	19	25
	NRS 23	35	18	-	-	25.5	4.3	4	5	M4 x 12	4	2.9	19	25
MKR 20x1	NRS 25	40	18	-	-	30.5	4.3	4	5	M4 x 12	4	2.9	22	29
MKR 25x1.5	NRS 27	45	20	-	-	36.5	4.3	5	6.5	M4 x 12	4	2.9	33	47
	NRS 30	45	20	-	-	36.5	4.3	5	6.5	M4 x 12	4	2.9	33	47
MKR 35x1.5	NRS 39	53	22	-	-	45.5	4.3	5	7	M4 x 16	4	2.9	47	66
MKR 40x1.5	NRS 44	58	22	-	-	50.5	4.3	5	7	M4 x 16	4	2.9	49	66
MKR 45x1.5	NRS 48	68	22	-	-	58	4.3	6	6.5	M4 x 16	6	2.9	53	84
MKR 55x1.5	NRS 60	75	25	-	-	66.5	4.3	6	9	M4 x 16	6	2.9	72	96
MKR 60x1.5	NRS 64	84	26	-	-	74.5	5.3	6	9	M5 x 16	6	6	123	163
MKR 70x1.5	NRS 75	95	28	-	-	85	5.3	8	9.5	M5 x 20	6	6	153	203

*Note: All dimensions are in mm unless otherwise indicated.



FIXED
Use an EZRF

SIMPLE
Customer specified
custom end machining