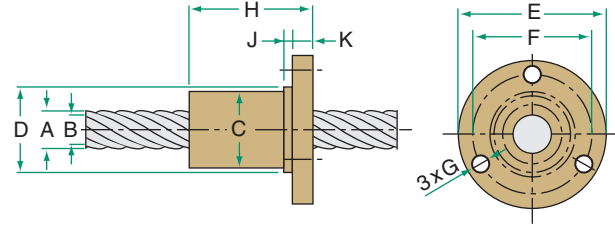


5 Speedy™ METRIC THREAD

LEAD ACCURACY: ±17.5µm/25mm



METRIC LEAD SCREW AND NUT TECHNICAL DATA

PRODUCT SPECIFICATIONS		SCREW SIZE		
		5x5	5x20	
Diameter - A (mm)		5.4	6.0	
Lead (mm)		5	20	
Pitch (mm)		1.25	1.25	
Starts		4	16	
Weight (kg/m)		.14	.20	
B - root diameter (mm)		3.6	5.0	
Part No. *	RH	Alloy	ESS-0505-RA	ESS-0520-RA
		Stainless	ESS-0505-RS	ESS-0520-RS
	LH	Alloy	—	ESS-0520-LA
		Stainless	—	ESS-0520-LS

* Custom Lengths Available - See page 47 to specify length

BRONZE NUT		5x5	5x20
Load Rating (N)		390	390
Efficiency		68.5%	78.4%
Torque to Raise 1 kN (N·m)		1.2	4.1
Weight (g)		80	83
Part No.	RH	ESN-0505-RBN	ESN-0520-RBN
	LH	—	ESN-0520-LBN

PLASTIC NUT		5x5	5x20
Load Rating (N)		300	300
Efficiency		78.2%	86.1%
Torque to Raise 1 kN (N·m)		1.0	3.7
Weight (g)		16	15
Part No.	RH	ESN-0505-RPN	ESN-0520-RPN
	LH	—	ESN-0520-LPN

NUT DIMENSIONS (mm)		5x5	5x20
C Nut Diameter		20.5	20.5
D Pilot Diameter		21	21
E Flange Diameter		38	38
F BCD Mounting Hole		29	29
G Mounting Hole Diameter		4.2	4.2
H Nut Length	Bronze	18	18
	Plastic	25	25
J Pilot Width		3	3
K Flange Width		5	5

LUBRICANT

Prolong lead screw and nut performance with these special lubricants.



E-100 12 Oz.
Lead Screw
Spray Lubricant



PAG-1 1 lb.
Lead Screw
Grease

See page 14 for complete product details.