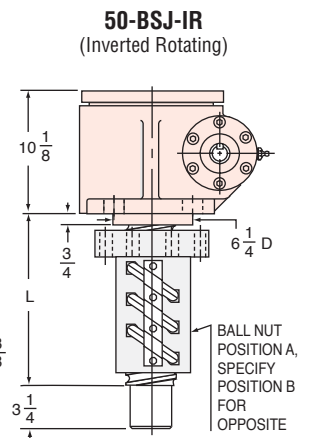
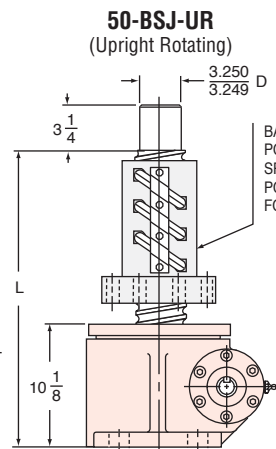
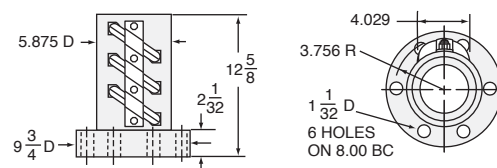


FOR ORDERING
SPECIFY "L" DIMENSION
L (min) = TRAVEL + 24 1/2

FOR ORDERING
SPECIFY "L" DIMENSION
L (min) = TRAVEL + 14 3/8



BALL NUT & FLANGE DIMENSIONS



50-BSJ STANDARD SCREW

SCREW: 4000-1000
 ROOT DIAMETER: 3.338
 DRAG TORQUE: 90 IN.-LB.
 START TORQUE: 2 x Running Torque
 WEIGHT (Approx. in Pounds)
 "0" TRAVEL: 490
 PER INCH TRAVEL: 5.0
 GREASE: 5.0

RATIO	TURNS OF WORM PER INCH TRAVEL	TORQUE TO RAISE ONE LB.		MAX. HP	MAX. WORM SPEED AT RATED LOAD		MAX. LOAD AT 1750 RPM	
		NON-KEYED	KEYED		NON-KEYED	KEYED	NON-KEYED	KEYED
10 1/2:1	10.66	.0256 in.-lbs.	.0281 in.-lbs.	16	394 rpm	359 rpm	22509 lbs.	20506 lbs.
32:1	32	.0139 in.-lbs.	.0152 in.-lbs.	5	227 rpm	207 rpm	12955 lbs.	11847 lbs.

CAUTION! JACK IS SELF-LOWERING. LIFTING SCREW OR NUT MUST BE SECURED TO PREVENT ROTATION FOR NON-KEYED UNITS.