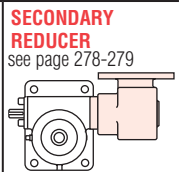
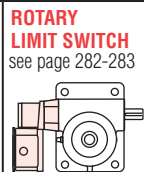
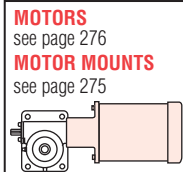
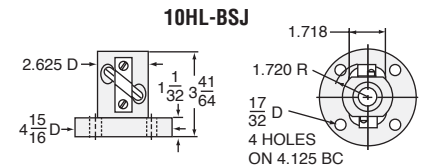
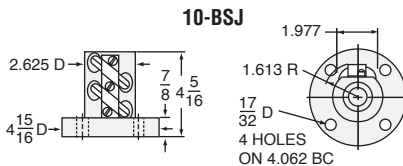


BALL NUT & FLANGE DIMENSIONS



10-BSJ and 10HL-BSJ SCREW
SCREW (10-BSJ): 1500-0473
(10HL-BSJ): 1500-1000
ROOT DIAMETER: 1.140
DRAG TORQUE: 20 IN.-LB.
START TORQUE: 2 x Running Torque
WEIGHT (Approx. in Pounds)
"0" TRAVEL: 50
PER INCH TRAVEL: .8
GREASE: 1.5

	RATIO	TURNS OF WORM PER INCH TRAVEL	TORQUE TO RAISE ONE LB.		MAX. HP	MAX. WORM SPEED AT RATED LOAD		MAX. LOAD AT 1750 RPM	
			NON-KEYED	KEYED		NON-KEYED	KEYED	NON-KEYED	KEYED
10-BSJ	8:1	16.88	.0151 in.-lbs.	.0166 in.-lbs.	5	1043 rpm	949 rpm	11925 lbs.	10847 lbs.
	24:1	50.66	.0077 in.-lbs.	.0085 in.-lbs.	1 1/2	618 rpm	556 rpm	7016 lbs.	6355 lbs.
10HL-BSJ	8:1	8	.0319 in.-lbs.	.0351 in.-lbs.	5	494 rpm	449 rpm	5645 lbs.	5132 lbs.
	24:1	24	.0162 in.-lbs.	.0178 in.-lbs.	1 1/2	293 rpm	266 rpm	3334 lbs.	3044 lbs.

CAUTION! JACK IS SELF-LOWERING. LIFTING SCREW OR NUT MUST BE SECURED TO PREVENT ROTATION FOR NON-KEYED UNITS.