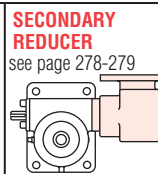
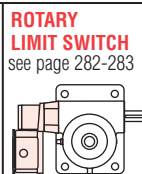
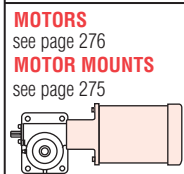
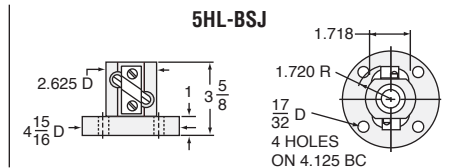
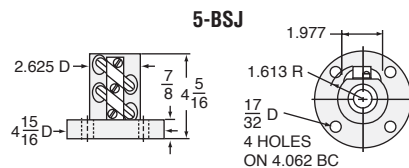


BALL NUT & FLANGE DIMENSIONS



5-BSJ and 5HL-BSJ SCREW

SCREW (5-BSJ):	1500-0473
(5HL-BSJ):	1500-1000
ROOT DIAMETER:	1.140
DRAG TORQUE:	10 IN.-LB.
START TORQUE:	2 x Running Torque
WEIGHT (Approx. in Pounds)	
"0" TRAVEL:	35
PER INCH TRAVEL:	.6
GREASE:	1

RATIO	TURNS OF WORM PER INCH TRAVEL	TORQUE TO RAISE ONE LB.		MAX. HP	MAX. WORM SPEED AT RATED LOAD		MAX. LOAD AT 1750 RPM		
		NON-KEYED	KEYED		NON-KEYED	KEYED	NON-KEYED	KEYED	
5-BSJ	6:1	12.66	.0183 in.-lbs.	.0201 in.-lbs.	3	1033 rpm	941 rpm	5904 lbs.	5375 lbs.
	24:1	50.66	.0073 in.-lbs.	.0080 in.-lbs.	3/4	647 rpm	590 rpm	3700 lbs.	3376 lbs.
5HL-BSJ	6:1	6	.0387 in.-lbs.	.0426 in.-lbs.	3	488 rpm	444 rpm	2792 lbs.	2537 lbs.
	24:1	24	.0153 in.-lbs.	.0168 in.-lbs.	3/4	308 rpm	280 rpm	1765 lbs.	1600 lbs.

CAUTION! JACK IS SELF-LOWERING. LIFTING SCREW OR NUT MUST BE SECURED TO PREVENT ROTATION FOR NON-KEYED UNITS.