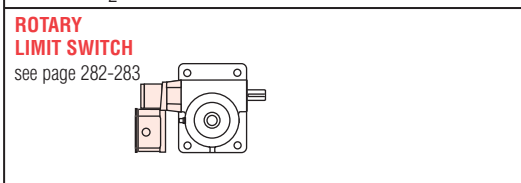
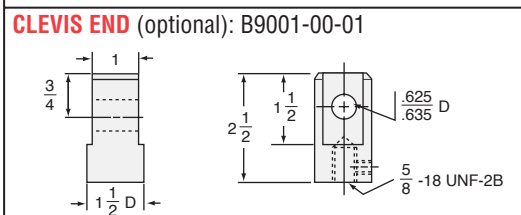
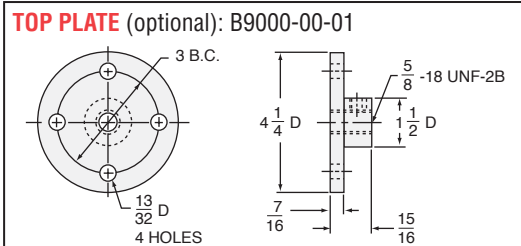
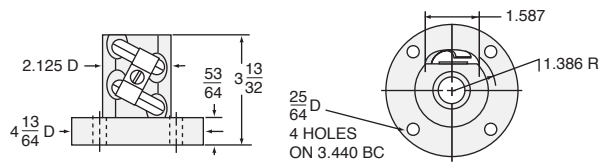


BALL NUT & FLANGE DIMENSIONS



FOR ORDERING
SPECIFY "L" DIMENSION
L (min) = TRAVEL + 8 11/32

FOR ORDERING
SPECIFY "L" DIMENSION
L (min) = TRAVEL + 5 1/32

3-BSJ STANDARD SCREW
SCREW: 1171-0413
ROOT DIAMETER: 0.870
DRAG TORQUE: 6 IN.-LB.
START TORQUE: 2 x Running Torque
WEIGHT (Approx. in Pounds)
"0" TRAVEL: 18.5
PER INCH TRAVEL: .6
GREASE: .5

RATIO	TURNS OF WORM PER INCH TRAVEL	TORQUE TO RAISE ONE LB.		MAX. HP	MAX. WORM SPEED AT RATED LOAD		MAX. LOAD AT 1750 RPM	
		NON-KEYED	KEYED		NON-KEYED	KEYED	NON-KEYED	KEYED
6:1	14.53	.0167 in.-lbs.	.0184 in.-lbs.	2	1260 rpm	1142 rpm	4313 lbs.	3914 lbs.
24:1	58.10	.0070 in.-lbs.	.0077 in.-lbs.	1/2	750 rpm	682 rpm	2572 lbs.	2338 lbs.

CAUTION! JACK IS SELF-LOWERING. LIFTING SCREW OR NUT MUST BE SECURED TO PREVENT ROTATION FOR NON-KEYED UNITS.