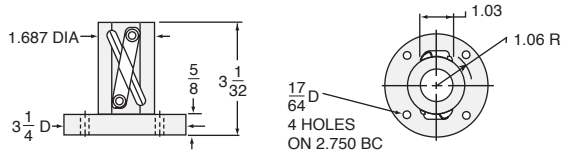


FOR ORDERING
SPECIFY "L" DIMENSION
L (min) = TRAVEL + 7 27 32

FOR ORDERING
SPECIFY "L" DIMENSION
L (min) = TRAVEL + 4 23 32

BALL NUT & FLANGE DIMENSIONS



MOTORS
see page 276

MOTOR MOUNTS
see page 275

ROTARY LIMIT SWITCH
see page 282-283

SECONDARY REDUCER
see page 278-279

2.5HL-BSJ STANDARD SCREW

SCREW: 1000-1000

ROOT DIAMETER: 0.820

DRAG TORQUE: 5 IN.-LB.

START TORQUE: 2 x Running Torque

WEIGHT (Approx. in Pounds)

"0" TRAVEL: 17

PER INCH TRAVEL: .6

GREASE: .5

RATIO	TURNS OF WORM PER INCH TRAVEL	TORQUE TO RAISE ONE LB.		MAX. HP	MAX. WORM SPEED AT RATED LOAD		MAX. LOAD AT 1750 RPM	
		NON-KEYED	KEYED		NON-KEYED	KEYED	NON-KEYED	KEYED
6:1	6	.0404 in.-lbs.	.0444 in.-lbs.	2	624 rpm	567 rpm	1783 lbs.	1620 lbs.
12:1	12	.0244 in.-lbs.	.0268 in.-lbs.	1 1/2	775 rpm	705 rpm	2214 lbs.	2013 lbs.
24:1	24	.0170 in.-lbs.	.0187 in.-lbs.	1/2	371 rpm	337 rpm	1059 lbs.	964 lbs.

CAUTION! JACK IS SELF-LOWERING. LIFTING SCREW OR NUT MUST BE SECURED TO PREVENT ROTATION FOR NON-KEYED UNITS.