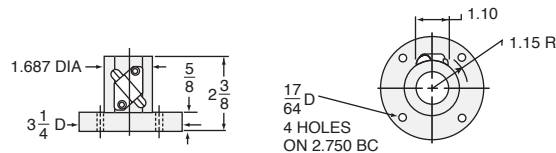


BALL NUT & FLANGE DIMENSIONS



2.5-BSJ STANDARD SCREW

SCREW: 1000-0250
 ROOT DIAMETER: 0.820
 DRAG TORQUE: 5 IN.-LB.
 START TORQUE: 2 x Running Torque
 WEIGHT (Approx. in Pounds)
 "0" TRAVEL: 17
 PER INCH TRAVEL: 0.6
 GREASE: 0.5

RATIO	TURNS OF WORM PER INCH TRAVEL	TORQUE TO RAISE ONE LB.		MAX. HP	MAX. WORM SPEED AT RATED LOAD		MAX. LOAD AT 1750 RPM	
		NON-KEYED	KEYED		NON-KEYED	KEYED	NON-KEYED	KEYED
6:1	24	.0102 in.-lbs.	.0112 in.-lbs.	2	1800 rpm	1636 rpm	5000 lbs.	4674 lbs.
12:1	48	.0061 in.-lbs.	.0067 in.-lbs.	1 1/2	1800 rpm	1636 rpm	5000 lbs.	4674 lbs.
24:1	96	.0042 in.-lbs.	.0046 in.-lbs.	1/2	1500 rpm	1370 rpm	4287 lbs.	3914 lbs.

CAUTION! JACK IS SELF-LOWERING. LIFTING SCREW OR NUT MUST BE SECURED TO PREVENT ROTATION FOR NON-KEYED UNITS.