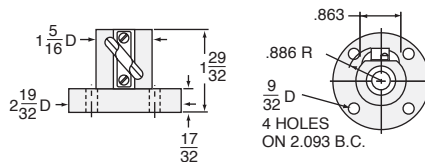


**BALL NUT & FLANGE DIMENSIONS**



**1-BSJ STANDARD SCREW**

SCREW: 0750-0200  
 ROOT DIAMETER: 0.602  
 DRAG TORQUE: 3 IN.-LB.  
 START TORQUE: 2 x Running Torque  
 WEIGHT (Approx. in Pounds)  
 "0" TRAVEL: 8  
 PER INCH TRAVEL: .04  
 GREASE: .5

RATIO	TURNS OF WORM PER INCH TRAVEL	TORQUE TO RAISE ONE LB.		MAX. HP	MAX. WORM SPEED AT RATED LOAD		MAX. LOAD AT 1750 RPM	
		NON-KEYED	KEYED		NON-KEYED	KEYED	NON-KEYED	KEYED
5:1	25	.0095 in.-lbs.	.0104 in.-lbs.	1/2	1660 rpm	1515 rpm	1895 lbs.	1731 lbs.
20:1	100	.0045 in.-lbs.	.0049 in.-lbs.	1/4	1750 rpm	1608 rpm	2000 lbs.	1837 lbs.

**CAUTION!** JACK IS SELF-LOWERING. LIFTING SCREW OR NUT MUST BE SECURED TO PREVENT ROTATION FOR NON-KEYED UNITS.