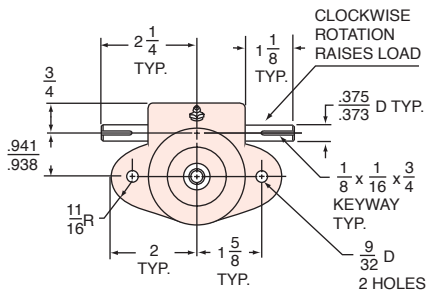


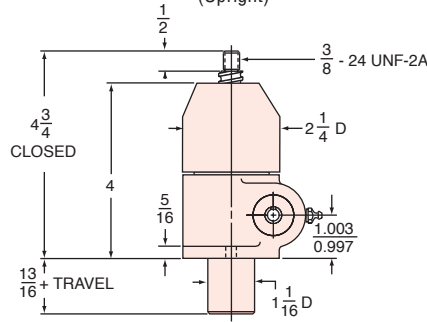
0.5-BSJ & 0.5HL-BSJ

INCH BALL SCREW JACKS TECHNICAL DATA

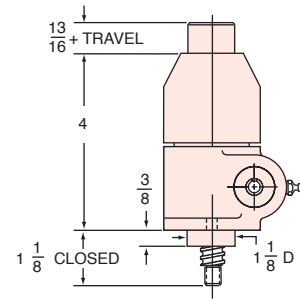
0.5-BSJ and 0.5HL-BSJ Housing Top View



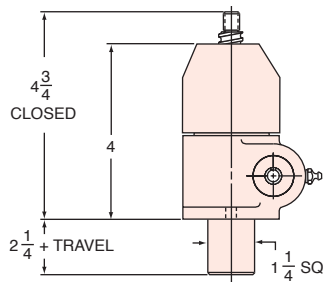
0.5-BSJ-U and 0.5HL-BSJ-U (Upright)



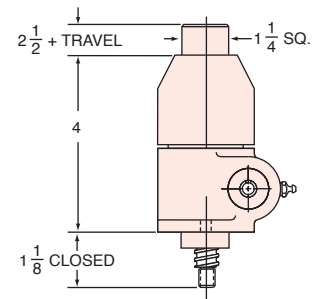
0.5-BSJ-I and 0.5HL-BSJ-I (Inverted)



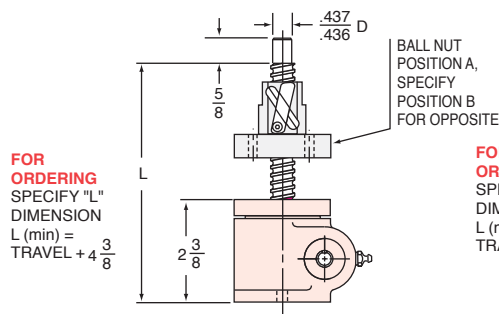
0.5-BSJ-UK and 0.5HL-BSJ-UK (Upright Keyed)



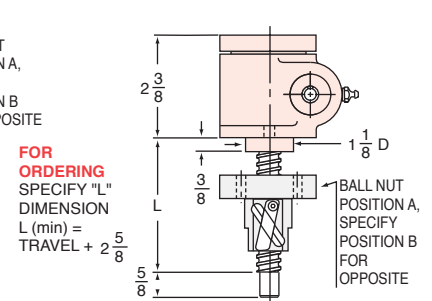
0.5-BSJ-IK and 0.5HL-BSJ-IK (Inverted Keyed)



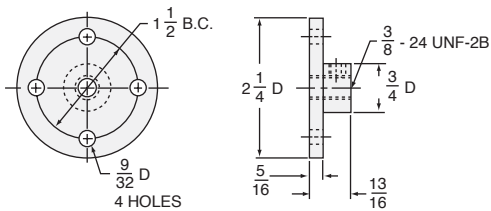
0.5-BSJ-UR and 0.5HL-BSJ-UR (Upright Rotating)



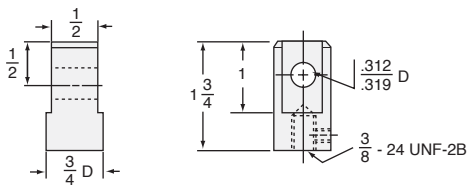
0.5-BSJ-IR and 0.5HL-BSJ-IR (Inverted Rotating)



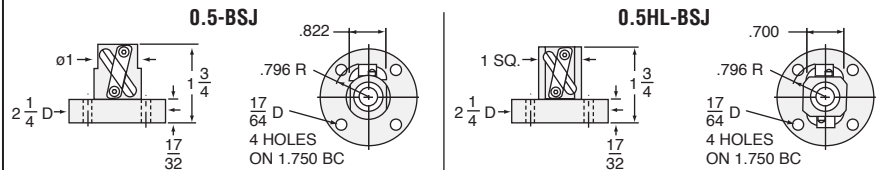
TOP PLATE (optional): B9000-00-12



CLEVIS END (optional): B9001-00-12



BALL NUT & FLANGE DIMENSIONS



0.5-BSJ and 0.5HL-BSJ SCREW

SCREW (5-BSJ): 0631-0200
(5HL-BSJ): 0631-0500
ROOT DIAMETER: 0.500
DRAG TORQUE: 1 IN.-LB.
START TORQUE: 2 x Running Torque
WEIGHT (Approx. in Pounds)
"0" TRAVEL: 3
PER INCH TRAVEL: .03
GREASE: .3

RATIO	TURNS OF WORM PER INCH TRAVEL	TORQUE TO RAISE ONE LB.		MAX. HP	MAX. WORM SPEED AT RATED LOAD		MAX. LOAD AT 1750 RPM	
		NON-KEYED	KEYED		NON-KEYED	KEYED	NON-KEYED	KEYED
0.5-BSJ	5:1	.0095 in.-lbs.	.0105 in.-lbs.	1/3	1800 rpm	1800 rpm	1000 lbs.	1000 lbs.
	20:1	.0040 in.-lbs.	.0044 in.-lbs.	1/6	1800 rpm	1800 rpm	1000 lbs.	1000 lbs.
0.5HL-BSJ	5:1	.0242 in.-lbs.	.0266 in.-lbs.	1/3	868 rpm	790 rpm	496 lbs.	450 lbs.
	20:1	.0102 in.-lbs.	.0112 in.-lbs.	1/6	1030 rpm	936 rpm	588 lbs.	534 lbs.

CAUTION! JACK IS SELF-LOWERING. LIFTING SCREW OR NUT MUST BE SECURED TO PREVENT ROTATION FOR NON-KEYED UNITS.