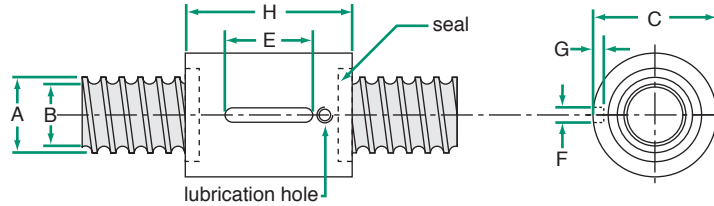


14mm Carry™ METRIC THREAD

LEAD ACCURACY: ±100µm/300mm

Carry Type Z Ball Nut

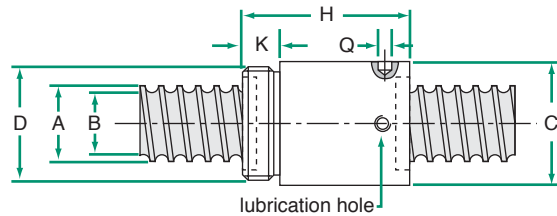


dimensions in mm

SCREW SPECIFICATIONS						NUT SPECIFICATIONS												
dia x lead	helix	reference number*	A	B root dia	wgt. (g/m)	part number	C	H	E	F	G	lash	wiper**	ball return location	wgt. (g)	torque to raise 1 kN (N·m)	load rating (N)	
																	Dyn. (C _a)	Static (C _{0a})
14 x 4	RH,LH	ECS-14040-□A	14.0	11.5	986	ECN-14040-□ZN	29	24	16	4	2.5	0.07	—	External	79	0.711	8100	16000
14 x 4	RH,LH	ECS-14040-□A	14.0	11.5	986	ECN-14040-□ZU	29	32	16	4	2.5	0.07	Plastic	External	82	0.711	8100	16000

*Lengths available up to 3,000 mm. See page 154 and 174 to complete reference number **All nuts with wiper feature an M5 lubrication hole.

Carry Type FG Ball Nut

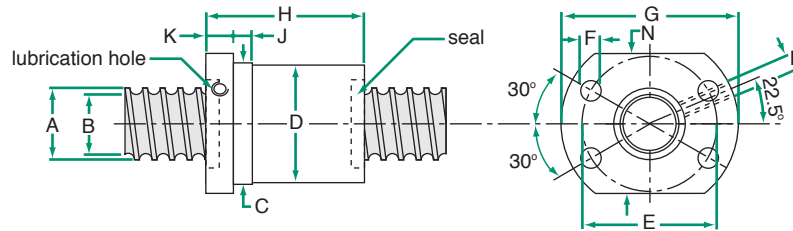


dimensions in mm

SCREW SPECIFICATIONS						NUT SPECIFICATIONS												
dia x lead	helix	reference number*	A	B root dia	wgt. (g/m)	part number	C	D	H	K	Q	lash	wiper**	ball return location	wgt. (g)	torque to raise 1 kN (N·m)	load rating (N)	
																	Dyn. (C _a)	Static (C _{0a})
14 x 4	RH,LH	ECS-14040-□A	14.0	11.5	986	ECN-14040-□GN	29	M22x1.5	32	8	3	0.07	—	External	97	0.711	8100	16000
14 x 4	RH,LH	ECS-14040-□A	14.0	11.5	986	ECN-14040-□GU	29	M22x1.5	38	8	3	0.07	Plastic	External	111	0.711	8100	16000

*Lengths available up to 3,000 mm. See page 154 and 174 to complete reference number **All nuts with wiper feature an M5 lubrication hole.

Carry Type FB Ball Nut



dimensions in mm

SCREW SPECIFICATIONS						NUT SPECIFICATIONS																	
dia x lead	helix	reference number*	A	B root dia	wgt. (g/m)	part number	C	D	E	F	G	H	J	K	N	P	lash	wiper**	ball return location	wgt. (g)	torque to raise 1 kN (N·m)	load rating (N)	
																						Dyn. (C _a)	Static (C _{0a})
14 x 4	RH,LH	ECS-14040-□A	14.0	11.5	986	ECN-14040-□BU	29	28.8	38	5.5	48	40	6	8	36	M5	0.07	Plastic	External	175	0.711	8100	16000

*Lengths available up to 3,000 mm. See page 154 and 174 to complete reference number **All nuts with wiper feature an M5 lubrication hole.

METRIC BALL SCREW AND NUT TECHNICAL DATA