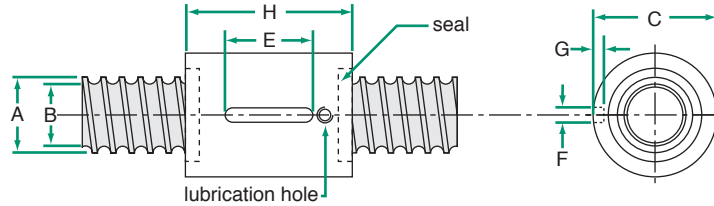


10mm Carry™ METRIC THREAD

LEAD ACCURACY: ±100µm/300mm

Carry Type Z Ball Nut



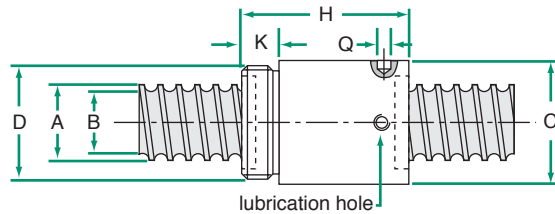
dimensions in mm

SCREW SPECIFICATIONS						NUT SPECIFICATIONS												
dia x lead	helix	reference number*	A	B root dia	wgt. (g/m)	part number	C	H	E	F	G	lash	wiper**	ball return location	wgt. (g)	torque to raise 1 kN (N·m)	load rating (N)	
																	Dyn. (C _a)	Static (C _{0a})
10 x 2	RH	ECS-10020-RA	9.7	8.2	494	ECN-10020-RZN	18	14	10	3	1.2	0.06	—	Internal	15	0.356	1250	2100
10 x 3	RH,LH†	ECS-10030-□□	9.9	7.8	494	ECN-10030-□ZU	22	24	10	3	2.0	0.06	Plastic	External	46	0.541	2800	5000

*Lengths available up to 3,000 mm. See page 154 and 174 to complete reference number **All nuts with wiper feature an M5 lubrication hole.

† Left hand screw not available in stainless steel

Carry Type FG Ball Nut



dimensions in mm

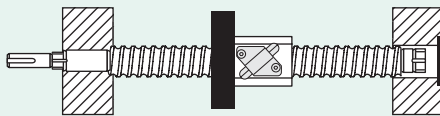
SCREW SPECIFICATIONS						NUT SPECIFICATIONS												
dia x lead	helix	reference number*	A	B root dia	wgt. (g/m)	part number	C	D	H	K	Q	lash	wiper**	ball return location	wgt. (g)	torque to raise 1 kN (N·m)	load rating (N)	
																	Dyn. (C _a)	Static (C _{0a})
10 x 2	RH	ECS-10020-RA	9.7	8.2	494	ECN-10020-RGN	18	M16x1	22	8	2.5	0.06	—	Internal	23	0.356	1250	2100
10 x 2	RH	ECS-10020-RA	9.7	8.2	494	ECN-10020-RDN	19.5	M17x1	22	7	2.5	0.06	—	Internal	23	0.356	1700	2800
10 x 3	RH,LH†	ECS-10030-□□	9.9	7.8	494	ECN-10030-□GU	21	M18x1	29	9	3	0.06	Plastic	External	44	0.533	2800	5000

*Lengths available up to 3,000 mm. See page 154 and 174 to complete reference number **All nuts with wiper feature an M5 lubrication hole.

† Left hand screw not available in stainless steel

BALL SCREW ASSEMBLIES

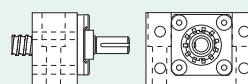
These assemblies are shipped with screw, nut, flange, and bearing supports.



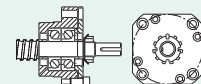
See page 145 for complete product details.

EZZE-MOUNT™ END BEARING SUPPORTS

A convenient solution for mounting ball screw assemblies.



Single or Double Bearing
Universal Mount



Single or Double Bearing
Flange Mount

See page 214 for complete product details.