

0875-0200 SRT

LEAD ACCURACY: ±0.004 in./ft.

Single Start

- 0.875** Ball Circle Diameter
- 0.200** Lead
- 0.735** Root Diameter
- 0.125** Nominal Ball Diameter
- 1.78** Screw Weight (lbs./ft.)

Standard Screw Lengths	PART NUMBERS
	RH
4 FT.	SRT8541
8 FT.	SRT8553
12 FT.	SRT8859

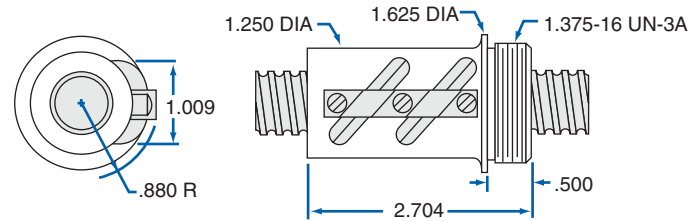
Custom cut lengths available up to 24'. For longer lengths contact Customer Service.

INCH BALL SCREW AND NUT TECHNICAL DATA

SBN Double Circuit Ball Nut

91 bearing balls per circuit - 182 total per nut

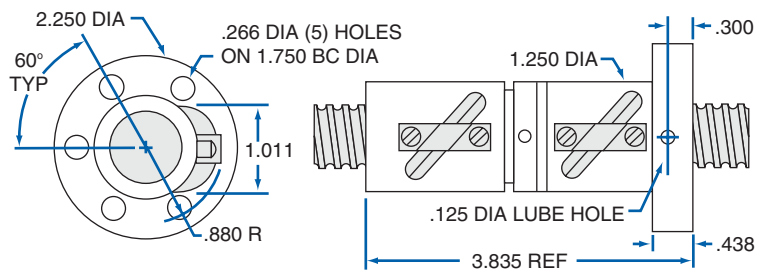
PRODUCT SPECIFICATIONS	RH
Dynamic Load (lbs.)	1,942
Static Load (lbs.)	18,063
Torque to Raise 1 lb. (in.-lb.)	.035
Nut Weight (lbs.)	.7
Ball Nut Number	SBN8277
Flange Part Number	FLG8281
Wiper Kit Part Number	WKB2648



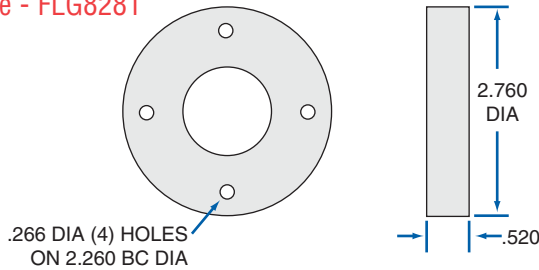
SAR Adjustable Preload Ball Nut with Wipers

91 bearing balls per circuit - 182 total per nut

PRODUCT SPECIFICATIONS	RH
Dynamic Load (lbs.)	971
Static Load (lbs.)	9,482
Torque to Raise 1 lb. (in.-lb.)	.035
Preload (lbs.)	97-291
Nut Weight (lbs.)	1.8
Ball Nut Number	SAR3040
Flange	INTEGRAL
Wiper Type	FELT

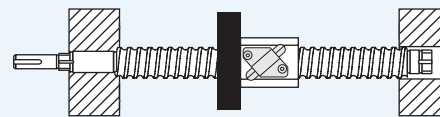


Flange - FLG8281



BALL SCREW ASSEMBLIES

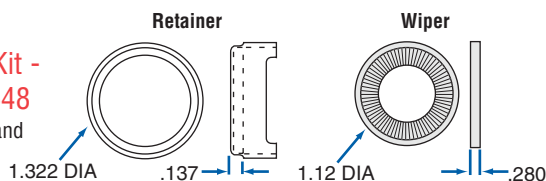
These assemblies are shipped with screw, nut, flange, and bearing supports.



See page 145 for complete product details.

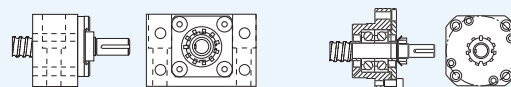
Brush Wiper Kit - WKB2648

2 wipers and
1 retainer



EZZE-MOUNT™ END BEARING SUPPORTS

A convenient solution for mounting ball screw assemblies.



Single or Double Bearing
Universal Mount

Single or Double Bearing
Flange Mount

See page 214 for complete product details.