

Request for Quotation



Fax: 216.271.7020

Date: _____

Pages (including this cover): _____

Customer: _____

Address: _____ City: _____

State/Province: _____ Country: _____ Zip: _____

Contact Name: _____

Phone: _____ Fax: _____

E-mail _____

Template Name

Quantity

Template Name	Quantity
_____	_____
_____	_____
_____	_____

Fax a copy of your drawing or select a template that best matches your application requirements.

1. Fill in all available data with tolerance in either inch or metric units.
2. If a specification is not on the template add it, the applicable dimensions and tolerances.
3. If a specification is not required but is on the template, draw a line through it, and mark the item description with N/A.
4. Include additional notes to the template to aid in quoting and manufacturing.

Fax this cover sheet along with template drawing to **CUSTOMER SERVICE AT: 216.271.7020**

For questions or help in selecting the best solution for your application requirements, please contact

APPLICATION ENGINEERING at: **800.321.7800** or e-mail: **engineering@nookind.com**

These templates are available in pdf format online
www.nookindustries.com

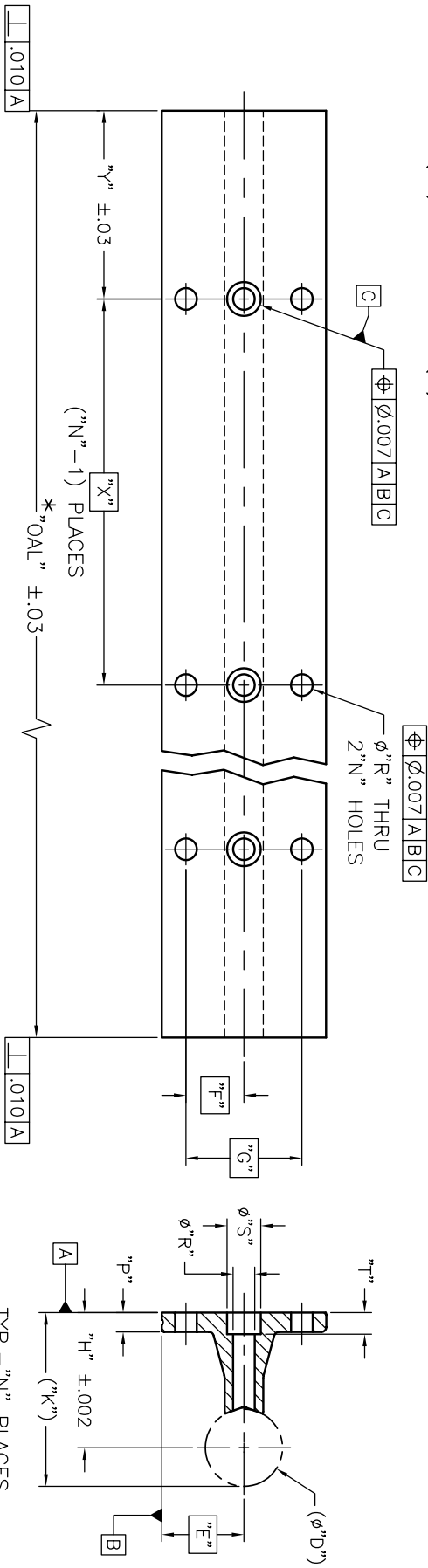
Nook Industries, Inc. 4950 East 49th Street, Cleveland Ohio 44125-1016

ITEM	DESCRIPTION
PART NUMBER:	
MATERIAL:	
OVERALL LENGTH (OAL):*	
HOLE SPACING (X):	
# OF HOLES (N):	
END TO 1st HOLE (Y):	

$N = ((OAL - .5X) / X) + 1$ (DROP DECIMAL)
 $Y = (OAL - X(N - 1)) / 2$ (FOR EQUAL "Y" ON EACH END)

*NOTE:
 THE "OAL" DIMENSION IS THE ACTUAL FINISHED LENGTH OF THE RAIL. UNLESS OTHERWISE SPECIFIED, ALL RAILS WILL BE ASSUMED TO BE PART OF A SHAFT AND RAIL ASSEMBLY AND WILL BE MACHINED TO THE NOMINAL "XX" LENGTH SPECIFIED AS FOLLOWS:

OVERALL LENGTH (OAL) = NOMINAL LENGTH (XX) - .13



NOOK STANDARD "XX" LENGTHS: 24", 36", & 48"
MAX. XX LENGTH = 48"

PART NUMBER	SHAFT REF. Ø"D"	"E"	"F"	"G"	"H"	"I"	"J"	"K"	"L"	"M"	"N"	"O"	"P"	"Q"	"R"	"S"	"T"	"U"	"V"	"W"	"X"	"Y"	"Z"
NSR-8-PD-XX	.4995/.4990	.750	.500	1.000	1.125	1.37	.188	.169	.28	.23	4.000	1.94											
NSR-10-PD-XX	.6245/.6240	.812	.562	1.125	1.125	1.43	.25	.193	.31	.23	4.000	1.94											
NSR-12-PD-XX	.7495/.7490	.875	.625	1.250	1.500	1.87	.25	.221	.38	.22	6.000	2.94											
NSR-16-PD-XX	.9995/.9990	1.062	.750	1.500	1.750	2.50	.25	.281	.44	.28	6.000	2.94											
NSR-20-PD-XX	1.2495/1.2490	1.250	.937	1.875	2.125	2.75	.313	.344	.53	.34	6.000	2.94											
NSR-24-PD-XX	1.4994/1.4989	1.500	1.125	2.250	2.500	3.25	.375	.406	.63	.41	8.000	3.94											
NSR-32-PD-XX	1.9994/1.9987	1.875	1.375	2.750	3.250	4.25	.50	.531	.81	.56	8.000	3.94											

THRU HOLES: C/BORE HOLE SPACINGS
 NOK STANDARD HOLE SPACINGS
 *Y = 1.94 FOR 36" RAIL LENGTH

DRAWING # _____
 P.O. # _____
 CUSTOMER: _____

UNLESS OTHERWISE SPECIFIED:
 DIMENSIONS ARE IN INCHES
 TOL. ON .015 ± .005
 2 PL. ON .015 ± .005
 INTERPRET DIM AND TOL. PER
 ASME Y14.5M - 1994

THIRD ANGLE PROJECTION

THIS DRAWING IS THE PROPERTY OF NOOK INDUSTRIES, INC. IT IS TO BE REPRODUCED WITHOUT THE WRITTEN CONSENT OF NOOK INDUSTRIES, INC.

NOOK INDUSTRIES, INC.
 44123-1016 USA

DR BRT: CMP 107/02/04
 CHKD BY: SZ 03/19/04
 APPROVED BY: FGM 03/24/04

NOOK
 THE LINEAR MOTION PEOPLE

DRILLED
 SHAFT SUPPORT RAIL

SCALE: N/A
 SHEET: 1 OF 1

customer reference: _____

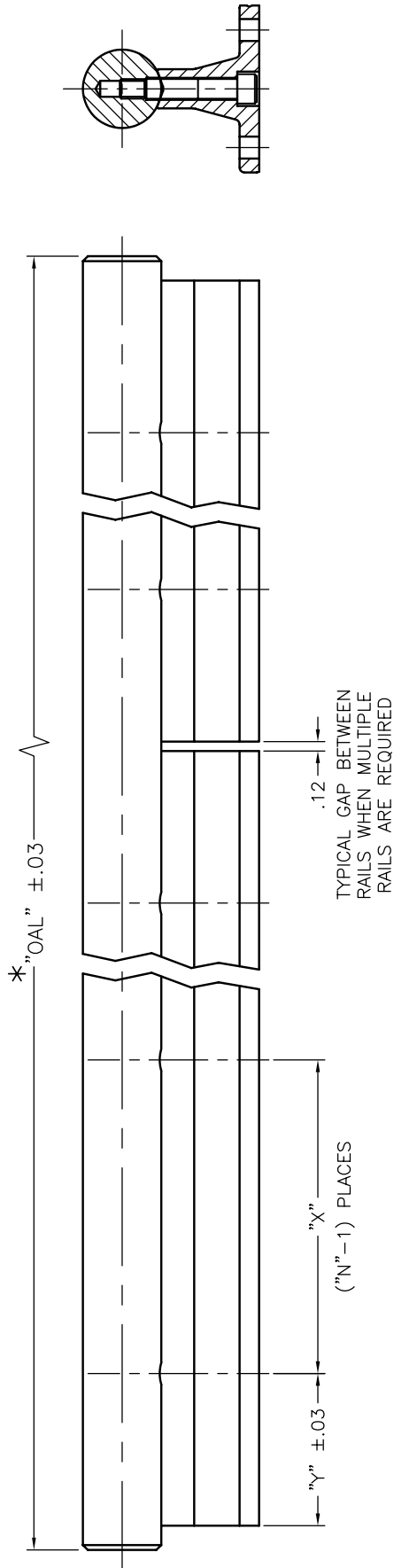
ITEM	DESCRIPTION
PART NUMBER:	
OVERALL LENGTH (OAL):*	
MAX. LENGTH = 144"	
HOLE SPACING (X):	
# OF HOLES (N):	
RAIL END TO 1st HOLE (Y):	

$$N = ((OAL - .5X) / X) + 1 \text{ (DROP DECIMAL)}$$

*NOTE: THE "OAL" DIMENSION IS THE FINISHED LENGTH OF THE SHAFT. MULTIPLE PIECES OF RAIL ARE REQUIRED FOR LENGTHS GREATER THAN 48". TWO PIECES OF RAIL WILL BE USED FOR LENGTHS UP TO 96". THREE PIECES OF RAIL WILL BE USED FOR LENGTHS UP TO 144".

NOOK STANDARD HOLE SPACINGS			
ASSEMBLY	P/N	"X"	"Y"
<input type="checkbox"/>	NSR-8-PDA-XX	4.000	1.94
<input type="checkbox"/>	NSR-10-PDA-XX	4.000	1.94
<input type="checkbox"/>	NSR-12-PDA-XX	6.000	2.94
<input type="checkbox"/>	NSR-16-PDA-XX	6.000	2.94
<input type="checkbox"/>	NSR-20-PDA-XX	6.000	2.94
<input type="checkbox"/>	NSR-24-PDA-XX	8.000	*3.94
<input type="checkbox"/>	NSR-32-PDA-XX	8.000	*3.94

*X = 1.94 FOR 36" RAIL LENGTH



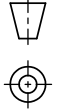
DRAWING # _____

P.O. # _____

CUSTOMER: _____

UNLESS OTHERWISE SPECIFIED:
DIMENSIONS ARE IN INCHES
TOL ON ANGLE ±1° 1 PL ±.030
2 PL ±.015 3 PL ±.005 125
INTERPRET DIM AND TOL PER
ASME Y14.5M - 1994

THIRD ANGLE PROJECTION



DR BR: CMP 02/18/04
CHK'D BY: GZ 03/19/04
APPROVED BY: FSM 03/24/04

THIS DRAWING IS THE PROPERTY OF NOOK INDUSTRIES, INC. AND CANNOT BE REPRODUCED WITHOUT THE EXPRESSED WRITTEN CONSENT OF NOOK INDUSTRIES, INC.

NOOK
THE LINEAR MOTION PEOPLE

NOOK INDUSTRIES, INC.
1450 EAST JONES STREET
CUYAHOGA HEIGHTS, OHIO
44128-1018 USA

SHAFT SUPPORT RAIL ASSEMBLY

SIZE: C 57855
DWG NO: NSR-XX-PDA-XX-1
SCALE: N/A
SHEET 1 OF 1