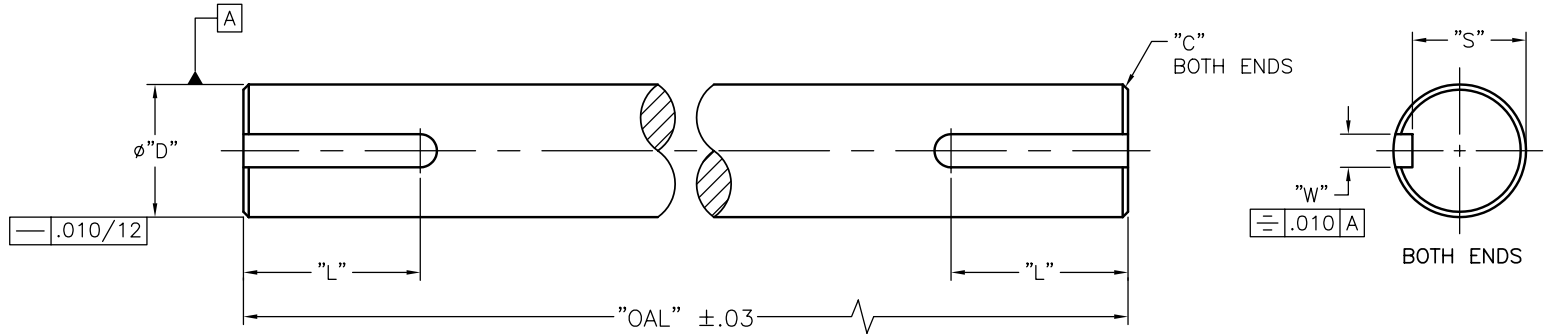


ITEM	DESCRIPTION
PART NUMBER:	
MATERIAL:	
OVERALL LENGTH (OAL): MAX. LENGTH = 144"	
NOMINAL KEYWAY:	
KEYWAY LENGTH (L):	
KEYWAY WIDTH (W):	
KEYWAY DEPTH (S):	

NOOK STANDARD KEYWAY DIMENSIONS

PART NUMBER	"D"	"C"	NOMINAL KEYWAY	"W"	"S"	"L"
LJ-8	.500/.498	.03	1/8" x 1/16"	.125/.127	.430/.425	1.00
LJ-12	.750/.748	.03	3/16" x 3/32"	.1875/.1895	.644/.639	1.25
LJ-16	1.000/.998	.03	1/4" x 1/8"	.250/.252	.859/.854	1.50
LJ-24	1.500/1.498	.06	3/8" x 3/16"	.375/.377	1.289/1.284	2.25



DRAWING # _____
 P.O. # _____
 CUSTOMER: _____

UNLESS OTHERWISE SPECIFIED: DIMENSIONS ARE IN INCHES TOL ON ANGLE ±1° 1 PL ±.030 2 PL ± .015 3 PL ± .005 125 ✓ INTERPRET DIM AND TOL PER ASME Y14.5M - 1994		DR BY: CMP DATE: 01/29/04 CHK'D BY: GZ DATE: 01/30/04 APPROVED BY: FGM DATE: 03/24/04	NOOK THE LINEAR MOTION PEOPLE NOOK INDUSTRIES, INC. 4850 EAST 49TH STREET CUYAHOGA HEIGHTS, OHIO 44125-1018 USA
THIRD ANGLE PROJECTION 		THIS DRAWING IS THE PROPERTY OF NOOK INDUSTRIES INC. AND CANNOT BE REPRODUCED WITHOUT THE EXPRESSED WRITTEN CONSENT OF NOOK INDUSTRIES INC.	
TITLE: LINKJAC SHAFTING		SIZE: C 57855 SCALE: N/A	DWG NO.: LJ-XX SHEET 1 OF 1

customer reference: _____

Request for Quotation



Fax: 216.271.7020

Date: _____

Pages (including this cover): _____

Customer: _____

Address: _____ City: _____

State/Province: _____ Country: _____ Zip: _____

Contact Name: _____

Phone: _____ Fax: _____

E-mail _____

Template Name

Quantity

_____	_____
_____	_____
_____	_____

Fax a copy of your drawing or select a template that best matches your application requirements.

1. Fill in all available data with tolerance in either inch or metric units.
2. If a specification is not on the template add it, the applicable dimensions and tolerances.
3. If a specification is not required but is on the template, draw a line through it, and mark the item description with N/A.
4. Include additional notes to the template to aid in quoting and manufacturing.

Fax this cover sheet along with template drawing to **CUSTOMER SERVICE AT: 216.271.7020**

For questions or help in selecting the best solution for your application requirements, please contact

APPLICATION ENGINEERING at: **800.321.7800** or e-mail: **engineering@nookind.com**

These templates are available in pdf format online

www.nookindustries.com

Nook Industries, Inc. 4950 East 49th Street, Cleveland Ohio 44125-1016