

Request for Quotation



Fax: 216.271.7020

Date: _____

Pages (including this cover): _____

Customer: _____

Address: _____ City: _____

State/Province: _____ Country: _____ Zip: _____

Contact Name: _____

Phone: _____ Fax: _____

E-mail _____

Template Name

Quantity

_____	_____
_____	_____
_____	_____

Fax a copy of your drawing or select a template that best matches your application requirements.

1. Fill in all available data with tolerance in either inch or metric units.
2. If a specification is not on the template add it, the applicable dimensions and tolerances.
3. If a specification is not required but is on the template, draw a line through it, and mark the item description with N/A.
4. Include additional notes to the template to aid in quoting and manufacturing.

Fax this cover sheet along with template drawing to **CUSTOMER SERVICE AT: 216.271.7020**

For questions or help in selecting the best solution for your application requirements, please contact

APPLICATION ENGINEERING at: **800.321.7800** or e-mail: **engineering@nookind.com**

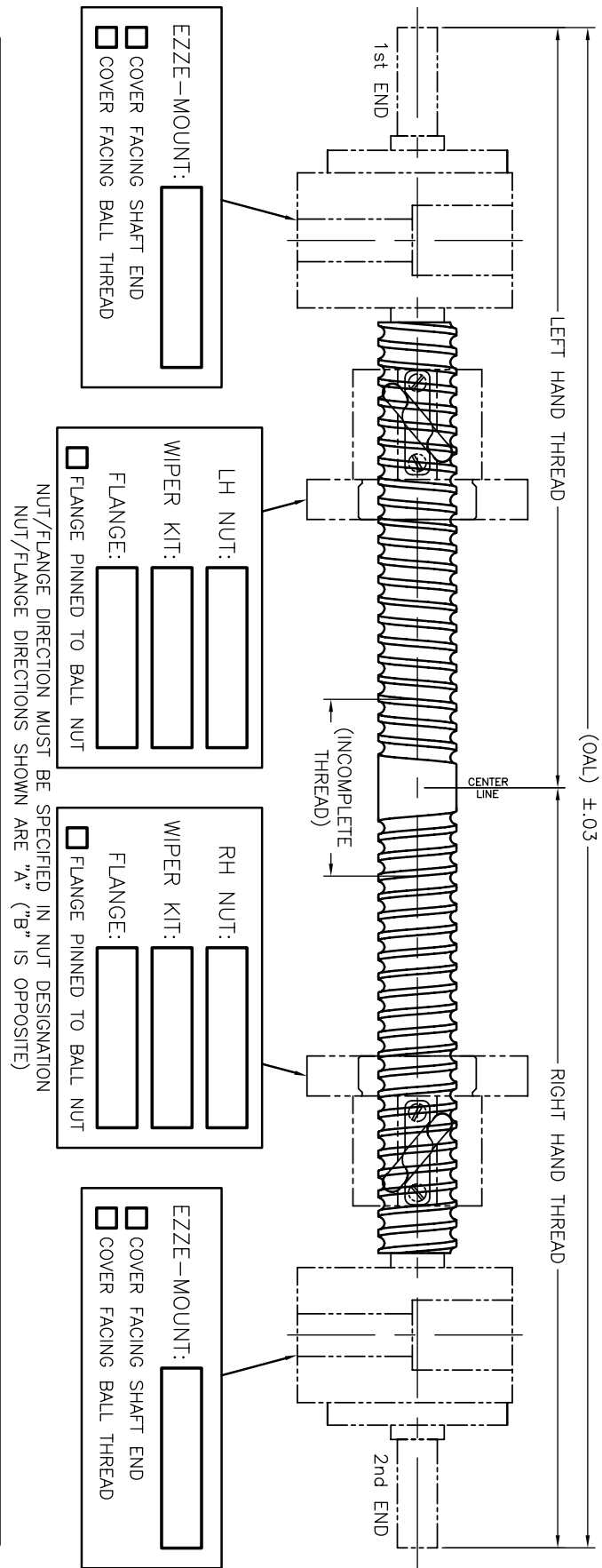
These templates are available in pdf format online

www.nookindustries.com

Nook Industries, Inc. 4950 East 49th Street, Cleveland Ohio 44125-1016

ITEM	DESCRIPTION
OVERALL LENGTH (OAL):	
L.H. THREAD:	
R.H. THREAD:	
INCOMPLETE THREAD:	
1st END CODE:	
2nd END CODE:	

MATERIAL: TL _____ RS _____



CONFIGURATION #: _____

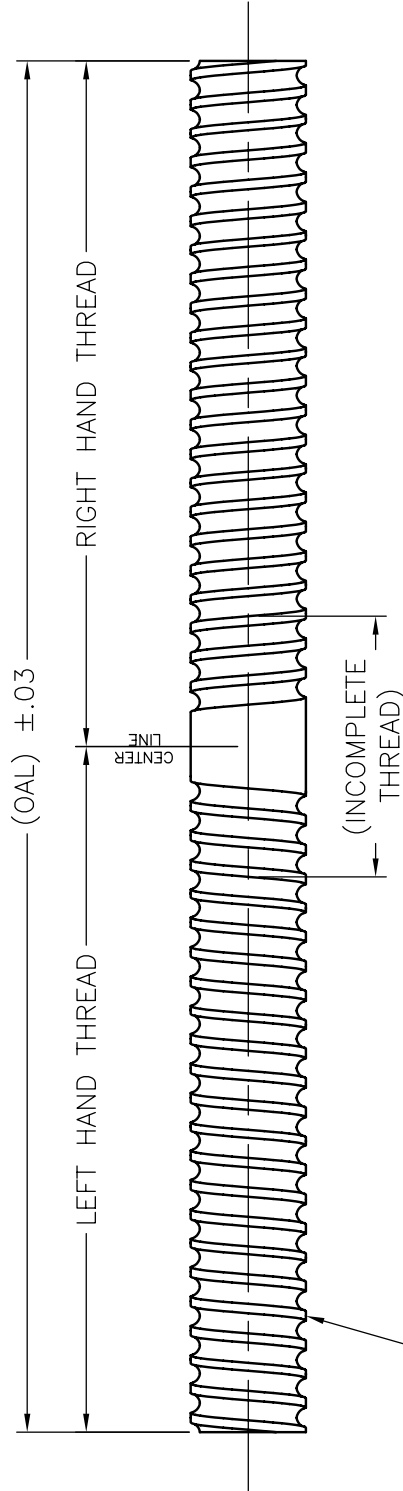
* Refer to the ball screw section in the Linear Motion Design Guide for details

DRAWING # _____
 P.O. # _____
 CUSTOMER: _____

UNLESS OTHERWISE SPECIFIED: DIMENSIONS ARE IN INCHES: TOL ON ANGLE ±.1° ±.05° TOL ON ANGLE ±.1° ±.05° INTERPRET DIM AND TOL PER ASME Y14.5M - 1994		DR BR:	DATE:	
THIRD ANGLE PROJECTION		QKRD BY:	DATE:	
THIS DRAWING IS THE PROPERTY OF NOOK INDUSTRIES INC. AND CANNOT BE REPRODUCED OR COPIED WITHOUT THE WRITTEN CONSENT OF NOOK INDUSTRIES INC.		APPROVED BY:	DATE:	
		BALL SCREW ASSEMBLY TWIN LEAD SCALE: N/A SHEET 1 OF 1		

customer reference: _____

ITEM	DESCRIPTION
OVERALL LENGTH (OAL):	
L.H. THREAD:	
R.H. THREAD:	
INCOMPLETE THREAD:	



MATERIAL: TL-----RS-----

UNLESS OTHERWISE SPECIFIED: DIMENSIONS ARE IN INCHES TOL ON ANGLE ±.1° 1 PL ±.030 2 PL ±.015 3 PL ±.005 .125 INTERPRET DIM AND TOL PER ASME Y14.5M - 1994		DR BY:	DATE:	NOOK INDUSTRIES, INC. 4950 EAST 49TH STREET CUYAHOGA HEIGHTS, OHIO 44125-1016 USA	
THIRD ANGLE PROJECTION		CHK'D BY:	DATE:	THE LINEAR MOTION PEOPLE	
THIRD ANGLE PROJECTION		APPROVED BY:	DATE:	TITLE	
THIS DRAWING IS THE PROPERTY OF NOOK INDUSTRIES INC. AND CANNOT BE REPRODUCED WITHOUT THE EXPRESSED WRITTEN CONSENT OF NOOK INDUSTRIES INC.				TWIN LEAD BALL SCREW	
				SIZE	REV
				B	57855
				CAGE CODE	DWG NO.
				TLBS-TMPLT	-
				SCALE: N/A	SHEET 1 OF 1

DRAWING # _____

P.O. # _____

CUSTOMER: _____

customer reference: _____