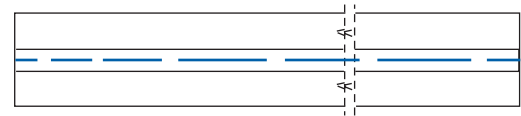
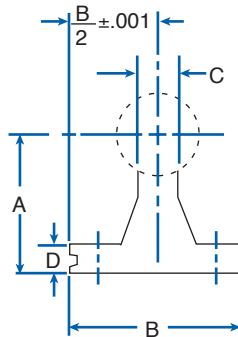


**SHAFT SUPPORT RAILS**

**SHAFT SUPPORT RAILS**



STANDARD LENGTHS: 24", 36", and 48"  
Special lengths available, contact the factory.

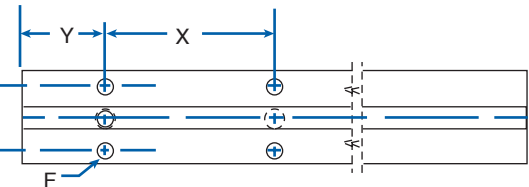
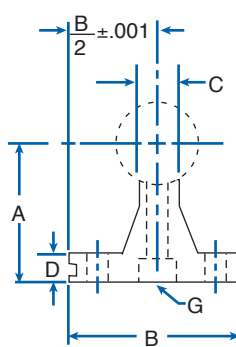
**HOW TO ORDER:**

State appropriate part number and length.  
NSR-10-xx      xx=OAL [inches]

MATERIAL: Aluminum alloy extrusion

PART NO.	NOM. SHAFT DIA. (in.)	A ±.002	B	C	D	WT. PER FT./LBS.
NSR-8	1/2	1.125	1-1/2"	1/4"	3/16"	.6
NSR-10	5/8	1.125	1-5/8"	5/16"	1/4"	.8
NSR-12	3/4	1.500	1-3/4"	3/8"	1/4"	1.0
NSR-16	1	1.750	2-1/8"	1/2"	1/4"	1.4
NSR-20	1-1/4	2.125	2-1/2"	9/16"	5/16"	2.1
NSR-24	1-1/2	2.500	3"	11/16"	3/8"	2.6
NSR-32	2	3.250	3-3/4"	7/8"	1/2"	4.2

**PREDRILLED SHAFT SUPPORT RAILS**



STANDARD LENGTHS: 24", 36", and 48"

**HOW TO ORDER:**

State appropriate part number and length.  
NSR-8-PD-xx      xx=OAL [inches]

MATERIAL: Aluminum alloy extrusion

PART NO.	NOM. SHAFT DIA. (in.)	A ±.002	B	C	D	E	F		G		Y	X	WT. PER FT./LBS.
							BOLT	HOLE	SCREW	HOLE			
NSR-8-PD	1/2	1.125	1-1/2"	1/4"	3/16"	1"	6	.169	6-32 x 7/8	.169"	2	4	.5
NSR-10-PD	5/8	1.125	1-5/8"	5/16"	1/4"	1-1/8"	8	.193	8-32 x 7/8	.193"	2	4	.7
NSR-12-PD	3/4	1.500	1-3/4"	3/8"	1/4"	1-1/4"	10	.221	10-32 x 7/8	.221"	3	6	.9
NSR-16-PD	1	1.750	2-1/8"	1/2"	1/4"	1-1/2"	1/4"	.281	1/4-20 x 1-1/2	.281"	3	6	1.2
NSR-20-PD	1-1/4	2.125	2-1/2"	9/16"	5/16"	1-7/8"	5/16"	.343	5/16-18 x 1-3/4	.343"	3	6	2.0
NSR-24-PD	1-1/2	2.500	3"	11/16"	3/8"	2-1/4"	3/8"	.406	3/8-16 x 2	.406"	4*	8	2.4
NSR-32-PD	2	3.250	3-3/4"	7/8"	1/2"	2-3/4"	1/2"	.531	1/2-13 x 2-1/2	.531"	4*	8	4.0

\*2 on 36" length