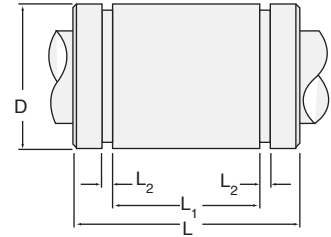


INCH - INSTRUMENT SERIES CLOSED BEARINGS



- Designed for use on an end supported PowerTrax™ HG “ISL” shafting
- Solid stainless steel shell, no seals
- Require .0001" clearance
- Matched bearing and shaft assemblies are available



Nominal Shaft Dia.	LBB Bearing Part Number	D	L	L ₁	L ₂	Weight (lb.)	Normal Load (lb.)	Max Load (lb.)
1/8"	ILBB-125	.3125/.3121	.500	.312	.030	.02	7	9
3/16"	ILBB-187	.3750/.3746	.562	.375	.030	.04	9	11
1/4"	ILBB-250	.5000/.4996	.750	.437	.040	.11	17	25

INCH - INSTRUMENT SERIES SHAFTING

For optimum performance, PowerTrax™ ILBB Instrument Bearings should be matched with PowerTrax™ HG “ISL” instrument shafting.

- Material:** 440C stainless steel
- Hardness:** Rc 55-60
- Diameter Tolerance:** .0001" for shafts thru 6" long
- Finish:** 2-4 microinch (rms)
- Straightness:** 0.001 per inch of length of the shaft.



INSTRUMENT SERIES LINEAR SHAFTING					
PART NUMBER	NOMINAL DIAMETER (inch)	TOLERANCES CLASS "I" DIAMETER (inches)	MAXIMUM LENGTH (inch)	MINIMUM DEPTH OF HARDNESS (inch)	WEIGHT PER INCH OF LENGTH (pounds)
ISL-125	1/8	.1248/.1247	12	.027	.004
ISL-187	3/16	.1873/.1872	12	.027	.008
ISL-250	1/4	.2498/.2497	12	.027	.014

LBB LINEAR BEARINGS TECHNICAL DATA